

WAAS CH 78438 W28A	APP CRS 280°	Rwy Ldg TDZE Apt Elev	5001 197 197
--	------------------------	-----------------------------	---

RNAV (GPS) RWY 28

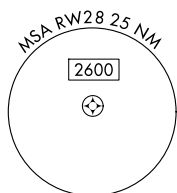
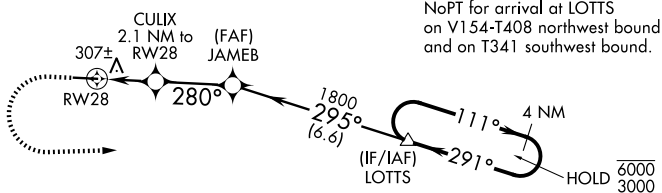
JOHN EDWIN JONES SR FLD/METTER MUNI (MHP)

RNP APCH - GPS.

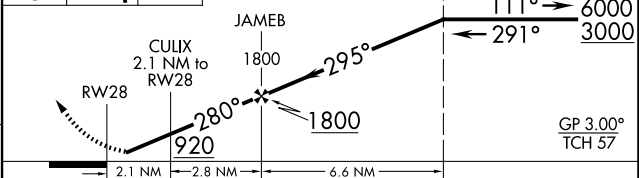
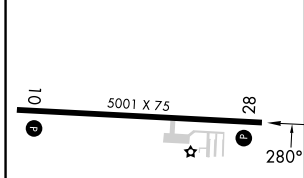
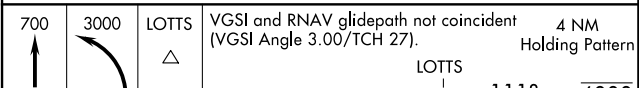
⚠ Rwy 28 helicopter visibility reduction below 1 SM NA. Baro-VNAV and VDP NA when using CWV altimeter setting. For uncompensated Baro-VNAV systems, LNAV/VNAV NA below -15°C or above 54°C. When local altimeter setting not received, use CWV altimeter setting.

MISSED APPROACH: Climb to 700 then climbing left turn to 3000 direct LOTTS and hold.

AWOS-3PT 120.3	JACKSONVILLE CENTER 132.925 363.2	UNICOM 123.0 (CTAF) 0
--------------------------	---	---------------------------------



ELEV 197	TDZE 197
-----------------	-----------------



CATEGORY	A	B	C	D
LPV DA		494-1	297 (300-1)	
LNAV/VNAV DA		527-1	330 (400-1)	
LNAV MDA	620-1	423 (500-1)	620-1¼	423 (500-1¼)
CIRCLING	820-1 623 (700-1)	880-1 683 (700-1)	1060-2½ 863 (900-2½)	1060-2¾ 863 (900-2¾)

MIRL Rwy 10-28 0
REIL Rwy 10 0

RNAV (GPS) RWY 28

SE-4, 11 JUN 2026 to 09 JUL 2026

SE-4, 11 JUN 2026 to 09 JUL 2026