

COLUMBUS, OHIO

AL-6846 (FAA)

26022

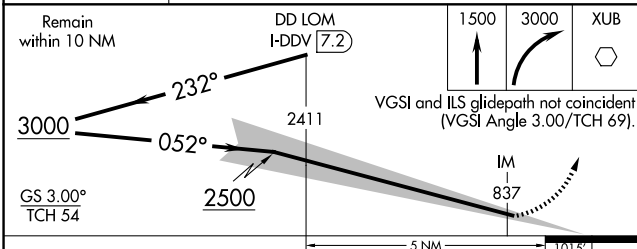
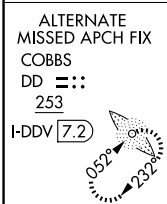
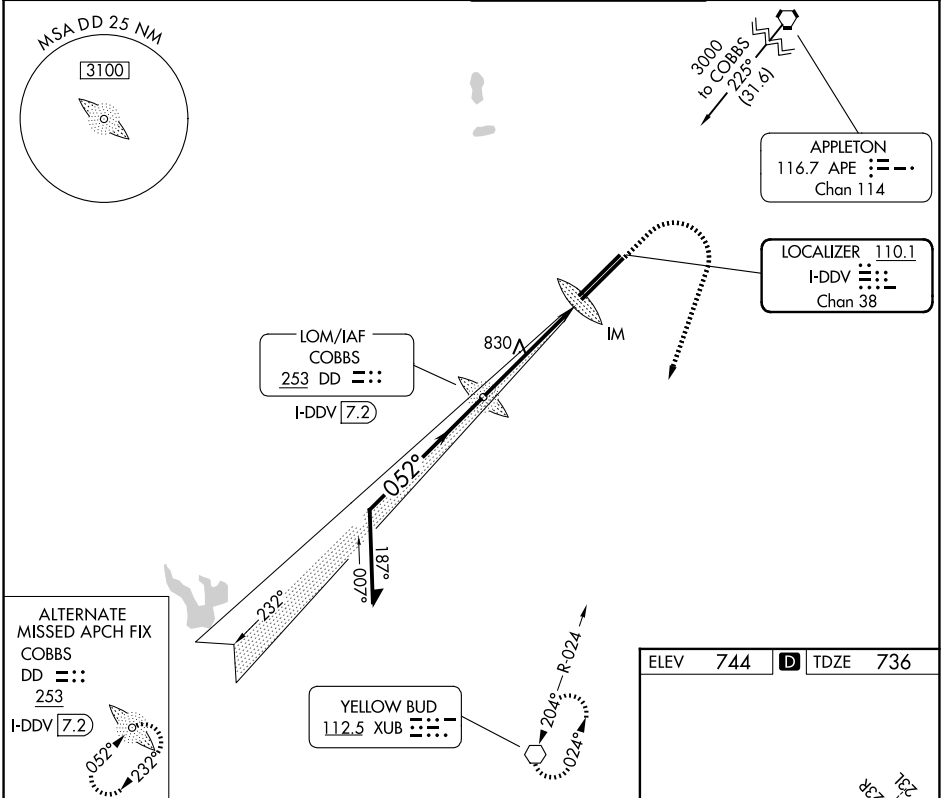
LOC/DME I-DDV 110.1 Chan 38	APP CRS 052°	Rwy Ldg 12103 TDZE 736 Apt Elev 744
---	------------------------	--

ILS RWY 5R (CAT II)

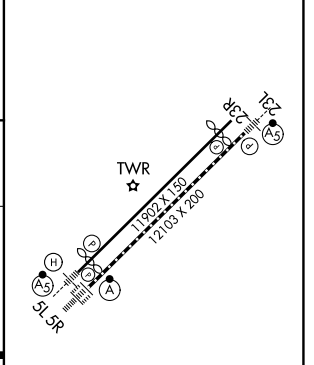
RICKENBACKER INTL (LCK)

ADF or DME required. NA	ALSIF-2 	MISSED APPROACH: Climb to 1500 then climbing right turn to 3000 direct XUB VOR and hold.
-----------------------------------	-------------	--

ATIS 132.75	COLUMBUS APP CON 134.0 279.6	RICK TOWER 120.05 348.4	GND CON 125.275 275.8
-----------------------	--	-----------------------------------	---------------------------------



ELEV 744	D TDZE 736
----------	-------------------



CATEGORY	A	B	C	D
S-ILS 5R		RA 100/12	100 DA 836	

CATEGORY II ILS - SPECIAL AIRCREW & AIRCRAFT CERTIFICATION REQUIRED

TDZL/RCLS Rwy 5R
REIL Rwy 23R
HIRL Rwys 5L-23R and 5R-23L

EC-2, 11 JUN 2026 to 09 JUL 2026

EC-2, 11 JUN 2026 to 09 JUL 2026

COLUMBUS, OHIO
Amdt 3E 09SEP21

39°49'N-82°56'W

RICKENBACKER INTL (LCK)
ILS RWY 5R (CAT II)