

LOC I-LCK <b>110.1</b>	APP CRS <b>232°</b>	Rwy Ldg 23L 23R	12103 10913
		TDZE	740 743
		Apt Elev	744 744

# ILS or LOC RWY 23L

RICKENBACKER INTL (LCK)

**⚠** Circling NA northwest of Rwy 5L-23R. When local altimeter setting not received, use John Glenn Columbus Intl altimeter setting: increase DA to 975 feet; increase all MDAs 40 feet and S-LOC 23L visibility Cats C/D to RVR 5500 and Circling visibility Cat D to 2 1/4 SM. Autopilot coupled approach NA below 1000 MSL.

MALSR

MISSED APPROACH: Climb to 3000, then left turn direct XUB VOR and hold.

ATIS  
**132.75**

COLUMBUS APP CON  
**134.0 279.6**

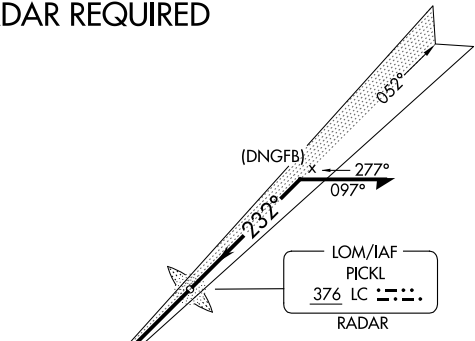
RICK TOWER  
**120.05 348.4**

GND CON  
**125.275 275.8**

ALTERNATE MISSED APCH FIX

PICKL  
376 LC

## RADAR REQUIRED



MISSED APCH FIX

YELLOW BUD  
XUB 112.5

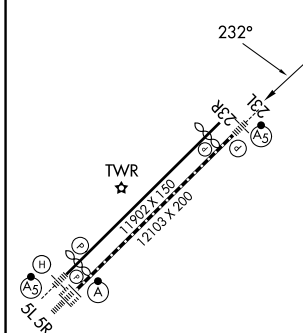
R-024

LOCALIZER 110.1  
I-LCK

MSA LC 25 NM

3100

ELEV 744	TDZE 23L 740
	TDZE 23R 743



3000

XUB

LC LOM RADAR

Remain within 10 NM

052°

2900

2372

2400

232°

GS 3.00°  
TCH 62

4.9 NM

VGSI and ILS glidepath not coincident (VGSI Angle 3.00/TCH 78).

CATEGORY	A	B	C	D
S-ILS 23L	940/24 200 (200-1/2)			
S-LOC 23L	1 220/24	480 (500-1/2)	1 220/50	480 (500-1)
SIDESTEP RWY 23R	1 220-1	477 (500-1)	1 220-1 1/2 477 (500-1 1/2)	1 220-2 477 (500-2)
CIRCLING	1 240-1	496 (500-1)	1 280-1 1/2 536 (600-1 1/2)	1 400-2 656 (700-2)

TDZL/RCLS Rwy 5R  
REIL Rwy 23R  
HIRL Rwy 5L-23R and 5R-23L

FAF to MAP 4.9 NM

Knots	60	90	120	150	180
Min:Sec	4:54	3:16	2:27	1:58	1:38

EC-2, 11 JUN 2026 to 09 JUL 2026

EC-2, 11 JUN 2026 to 09 JUL 2026