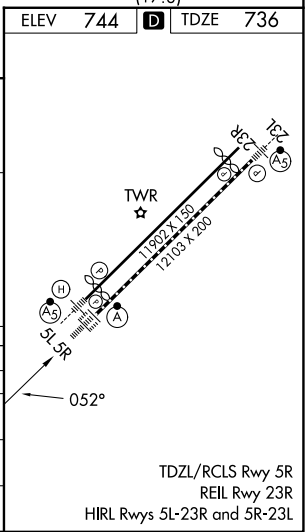
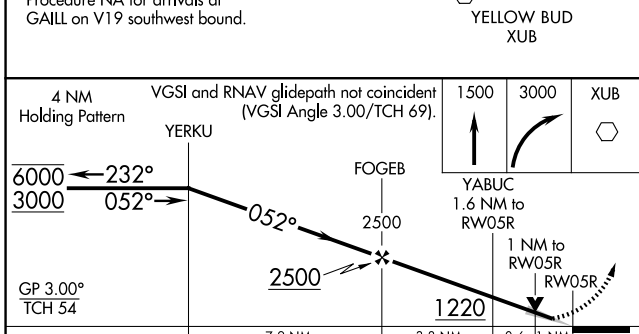
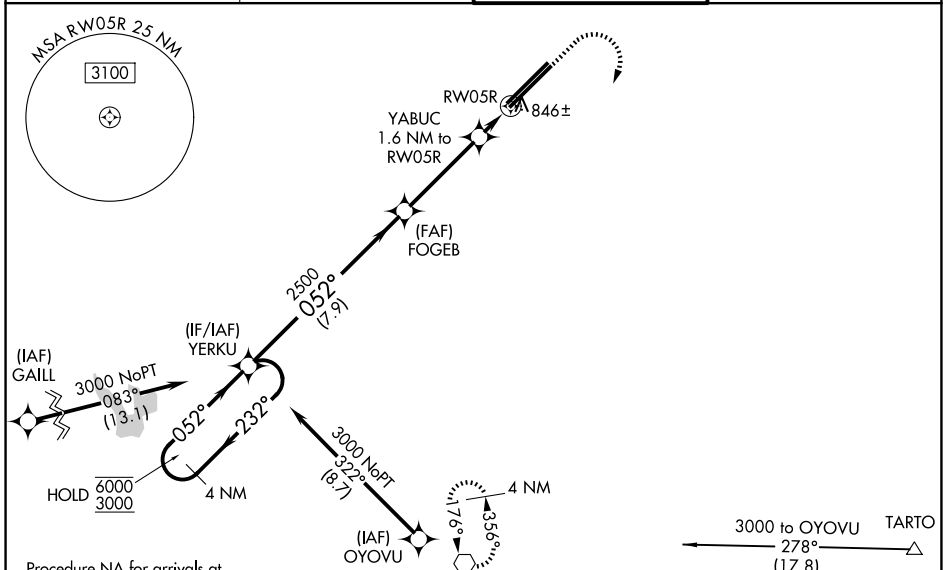


WAAS CH <b>78410</b> <b>W05A</b>	APP CRS <b>052°</b>	Rwy Ldg <b>12103</b> TDZE <b>736</b> Apt Elev <b>744</b>
--	------------------------	--

# RNAV (GPS) RWY 5R

RICKENBACKER INTL (LCK)

RNP APCH - GPS			ALSF-2 	MISSED APPROACH: Climb to 1500 then climbing right turn to 3000 direct XUB VOR and hold.
ATIS <b>132.75</b>	COLUMBUS APP CON <b>134.0 279.6</b>	RICK TOWER <b>120.05 348.4</b>		



CATEGORY	A	B	C	D
LPV DA		936/18	200 (200-1/2)	
LNAV/VNAV DA		1103/35	367 (400-5/8)	
LNAV MDA	1120/24	384 (400-1/2)	1120/35	384 (400-5/8)
CIRCLING	1240-1	496 (500-1)	1280-1 1/2 536 (600-1 1/2)	1400-2 656 (700-2)

EC-2, 11 JUN 2026 to 09 JUL 2026

EC-2, 11 JUN 2026 to 09 JUL 2026