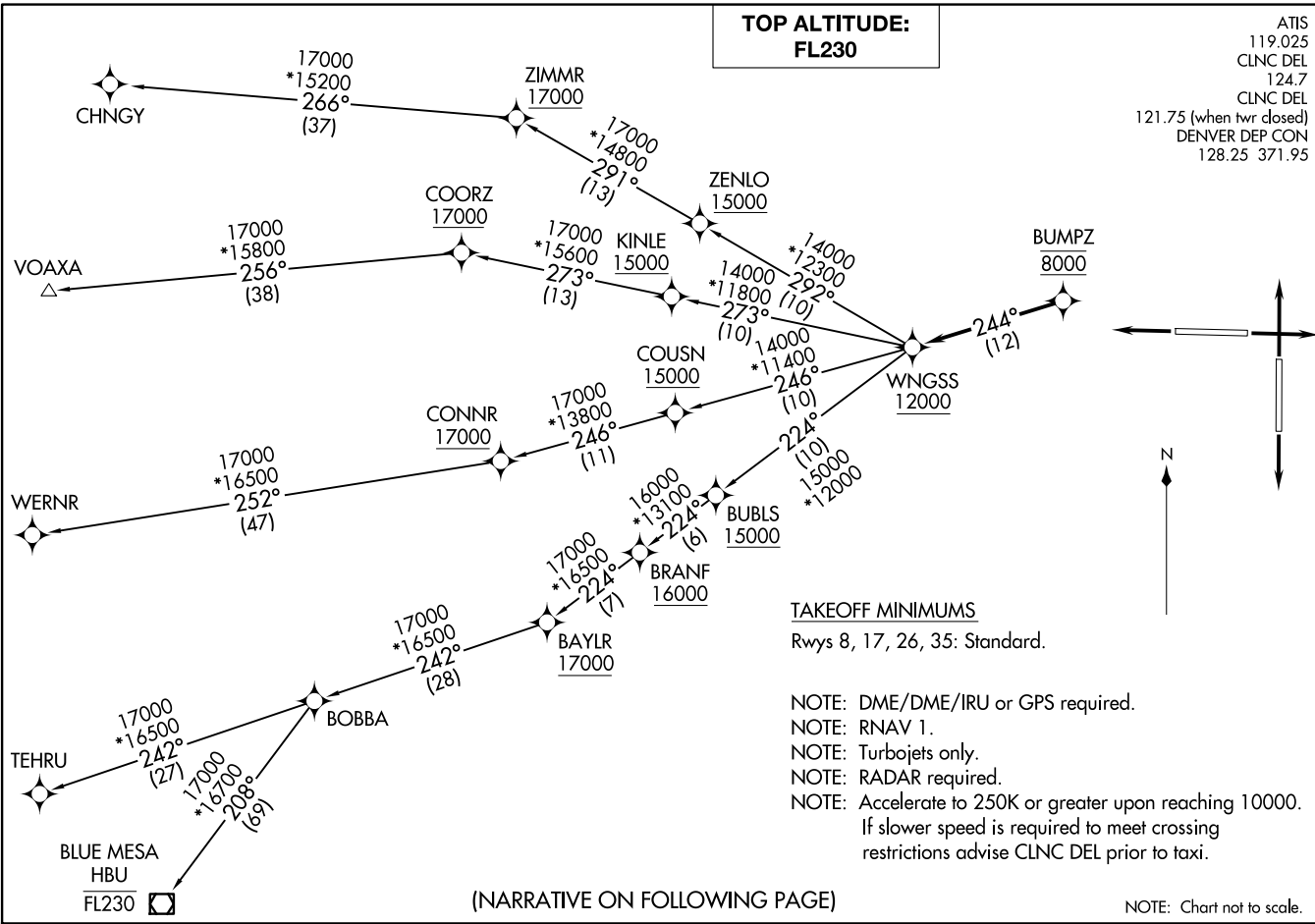


WNGSS ONE DEPARTURE (RNAV)
(WNGSS1, WNGSS) 26MAR20

DENVER, COLORADO
COLORADO AIR AND SPACE PORT (CFO)
DENVER, COLORADO





DEPARTURE ROUTE DESCRIPTION

TAKEOFF RUNWAY 8: Climb on a heading between 312° CW 228° as assigned by ATC. Thence. . . .

TAKEOFF RUNWAY 17: Climb on a heading between 352° CW 229° as assigned by ATC. Thence. . . .

TAKEOFF RUNWAY 26: Climb on a heading between 315° CW 083° as assigned by ATC. Thence. . . .

TAKEOFF RUNWAY 35: Climb on a heading between 313° CW 172° as assigned by ATC. Thence. . . .

. . . . expect RADAR vectors to cross BUMPZ at 8000 then on track 244° to cross WNGSS at or above 12000 then on (transition) maintain FL230 or filed lower altitude. Expect higher filed altitude ten minutes after departure.

- BLUE MESA TRANSITION (WNGSS1.HBU)
- CHNGY TRANSITION (WNGSS1.CHNGY)
- TEHRU TRANSITION (WNGSS1.TEHRU)
- VOAXA TRANSITION (WNGSS1.VOAXA)
- WERNR TRANSITION (WNGSS1.WERNR)

SW-1, 11 JUN 2026 to 09 JUL 2026

SW-1, 11 JUN 2026 to 09 JUL 2026