

KUSSO THREE DEPARTURE (RNAV)  
(KUSSO3.KUSSO) 14MAY26

LONE STAR DEP CON  
135.975 379.9  
CTAF  
123.0

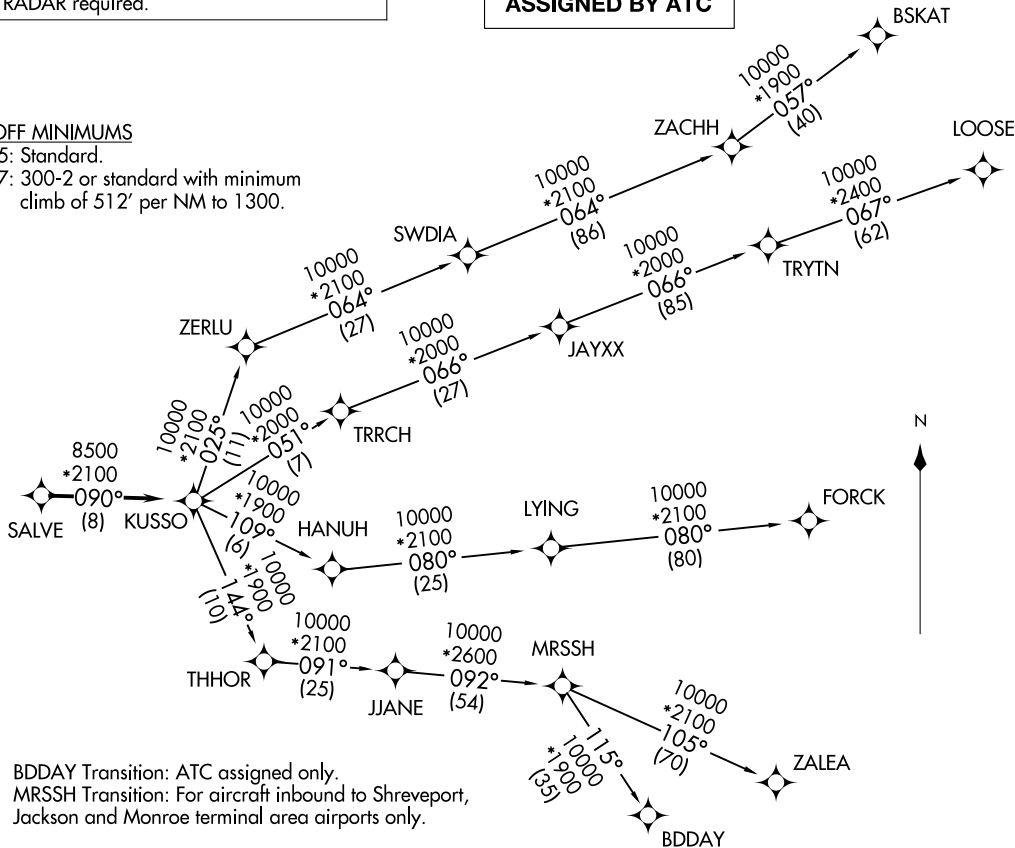
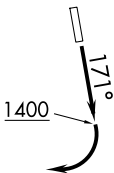
RNAV 1 - DME/DME/IRU or GPS required.

RADAR required.

**TOP ALTITUDE:  
ASSIGNED BY ATC**

TAKEOFF MINIMUMS

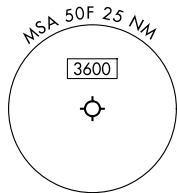
Rwy 35: Standard.  
Rwy 17: 300-2 or standard with minimum  
climb of 512' per NM to 1300.



NOTE: BDDAY Transition: ATC assigned only.  
NOTE: MRSSH Transition: For aircraft inbound to Shreveport,  
Jackson and Monroe terminal area airports only.

(CONTINUED ON FOLLOWING PAGE)

NOTE: Chart not to scale.



FORT WORTH, TEXAS  
BOURLAND FLD (50F)

(KUSSO3.KUSSO) 26134  
KUSSO THREE DEPARTURE (RNAV)

AL-6854 (FAA)

BOURLAND FLD (50F)  
FORT WORTH, TEXAS

# KUSSO THREE DEPARTURE (RNAV)



## DEPARTURE ROUTE DESCRIPTION

TAKEOFF RUNWAY 17: Climb on heading 171° to 1400 before turning right.

When entering controlled airspace, fly heading assigned by ATC, expect RADAR vectors to SALVE, then on track 090° to KUSSO, then on assigned transition. Maintain ATC assigned altitude, expect filed altitude 10 minutes after departure.

BDDAY TRANSITION (KUSSO3.BDDAY)

BSKAT TRANSITION (KUSSO3.BSKAT)

FORCK TRANSITION (KUSSO3.FORCK)

LOOSE TRANSITION (KUSSO3.LOOSE)

MRSSH TRANSITION (KUSSO3.MRSSH)

ZALEA TRANSITION (KUSSO3.ZALEA)

SC-2, 11 JUN 2026 to 09 JUL 2026

SC-2, 11 JUN 2026 to 09 JUL 2026