

WAAS CH <b>45716</b> <b>W35A</b>	APP CRS <b>354°</b>	Rwy Idg TDZE Apt Elev	<b>5001</b> <b>956</b> <b>971</b>
--	------------------------	-----------------------------	---

# RNAV (GPS) RWY 35

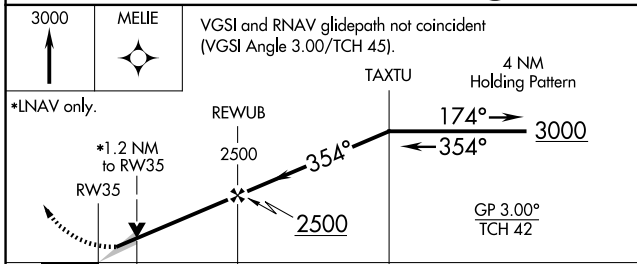
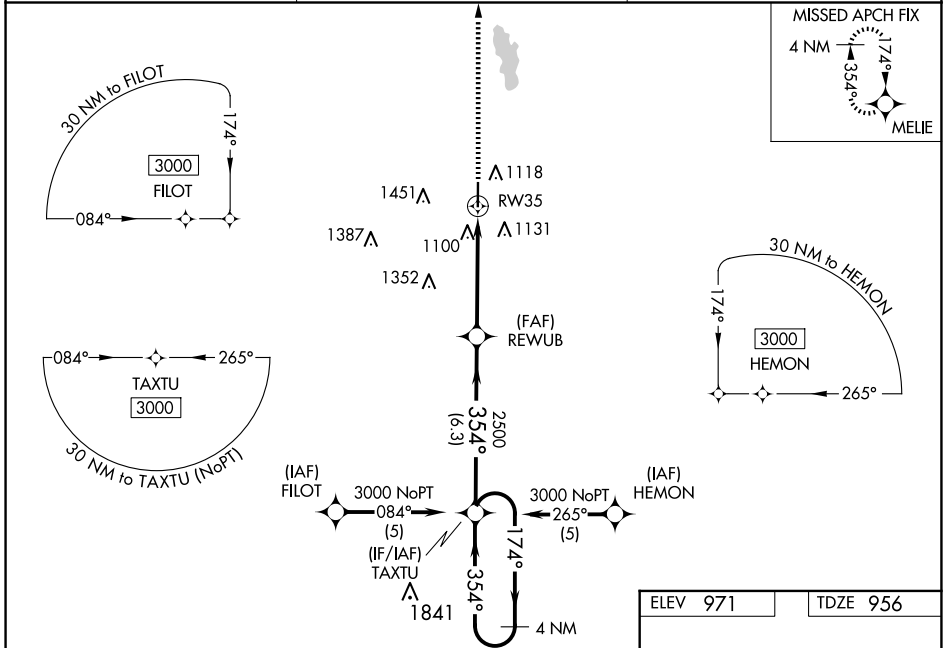
PAULS VALLEY MUNI (P.V.J)

**RNP APCH.**

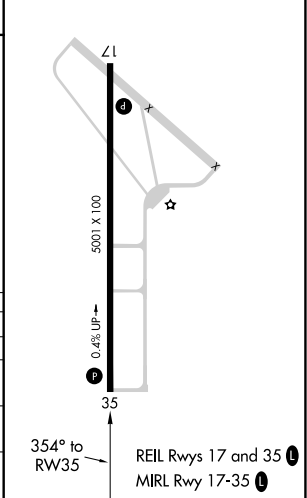
When local altimeter setting not received, use Ardmore Downtown Exec altimeter setting: increase all DA 97 feet and all MDA 100 feet; increase LPV and LNAV/VNAV all Cats visibility and LNAV Cats C/D and Circling Cat C visibility ¼ SM and Circling Cat D visibility ½ SM. Baro-VNAV and VDP NA when using Ardmore Downtown Exec altimeter setting. For uncompensated Baro-VNAV systems, LNAV/VNAV NA below -16°C or above 46°C.

**MISSED APPROACH:**  
Climb to 3000 direct MELIE and hold.

AWOS-3 <b>118.675</b>	FORT WORTH CENTER <b>124.75 323.0</b>	UNICOM <b>122.8 (CTAF) ①</b>
--------------------------	--	---------------------------------



ELEV 971	TDZE 956
----------	----------



CATEGORY	A	B	C	D
LPV DA		1156-¾	200 (200-¾)	
LNAV/VNAV DA		1447-1¾	491 (500-1¾)	
LNAV MDA	1360-1	404 (400-1)	1360-1¼	404 (400-1¼)
CIRCLING	1440-1	469 (500-1)	1540-1½	1760-2½
			569 (600-1½)	789 (800-2½)

SC-1, 11 JUN 2026 to 09 JUL 2026

SC-1, 11 JUN 2026 to 09 JUL 2026