

WAAS CH 78325 W02A	APP CRS 018°	Rwy Ldg TDZE Apt Elev	6001 484 501
--	------------------------	-----------------------------	---

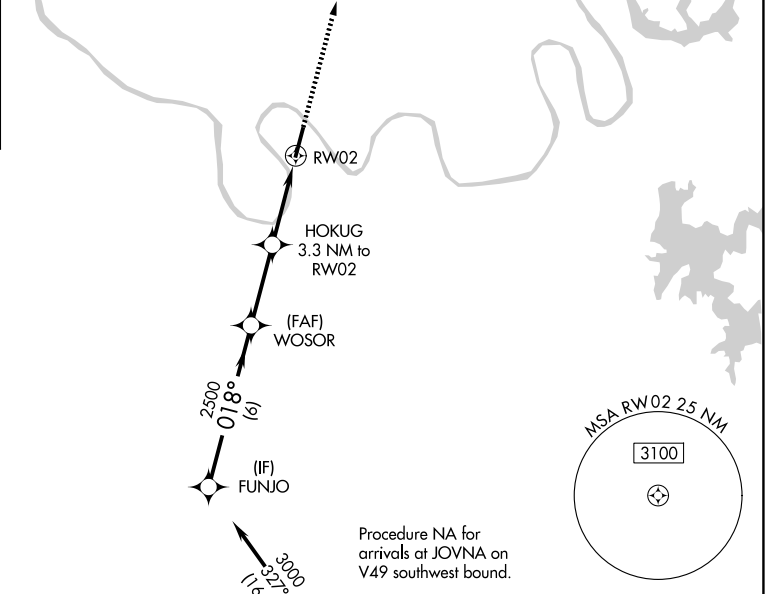
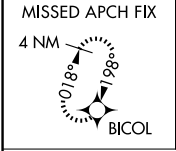
RNAV (GPS) RWY 2

JOHN C TUNE (JWN)

▽ For uncompensated Baro-VNAV systems, LNAV/VNAV NA below -15°C (5°F) or above 54°C (130°F). Circling NA E of Rwy 2-20. Baro-VNAV and VDP NA when using Nashville Intl altimeter setting. DME/DME RNP-0.3 NA. When local altimeter setting not received, use Nashville Intl altimeter setting and increase all DAs 39 feet and all MDAs 40 feet; increase LPV visibility all Cats 1/8 SM, LNAV visibility Cat B 1/4 SM.

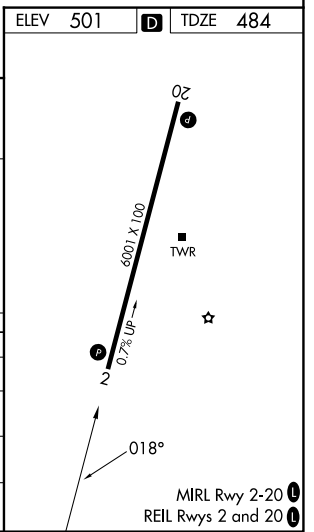
▲ NA MISSED APPROACH: Climb to 3000 direct BICOL and hold.

ATIS 127.075	NASHVILLE APP CON 119.35 372.0	JOHN TUNE TOWER ★ 119.45 (CTAF)	GND CON 121.7	UNICOM 122.7
------------------------	--	---	-------------------------	------------------------



ELEV 501	D	TDZE 484
----------	----------	----------

FUNJO	WOSOR	HOKUG 3.3 NM to RW02	RW02	
3000	2500	2500		
GP 3.00° TCH 40	018°	*1540	*2.1 NM to RW02	
6 NM	3 NM	1.2 NM	2.1 NM	
CATEGORY	A	B	C	D
LPV DA	734-7/8		250 (300-7/8)	
LNAV/VNAV DA	1079-2 1/2		595 (600-2 1/2)	
LNAV MDA	1160-1	676 (700-1)	1160-2	676 (700-2)
CIRCLING	1200-1	699 (700-1)	1340-2 3/4	839 (900-2 3/4)



SE-1, 11 JUN 2026 to 09 JUL 2026

SE-1, 11 JUN 2026 to 09 JUL 2026