

WAAS CH 86625 W20A	APP CRS 198°	Rwy Ldg TDZE Apt Elev	6001 501 501
--	------------------------	-----------------------------	---

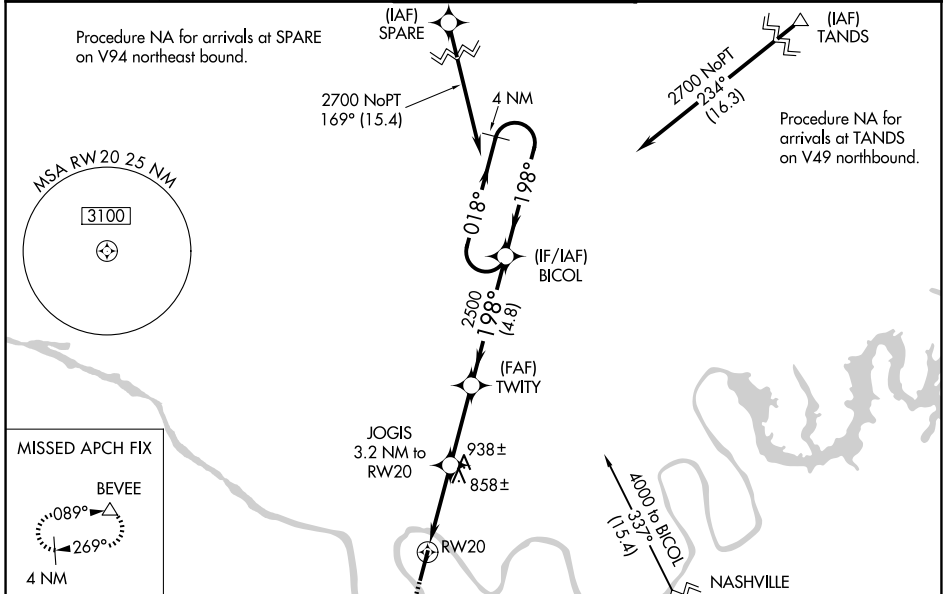
RNAV (GPS) RWY 20

JOHN C TUNE (JWN)

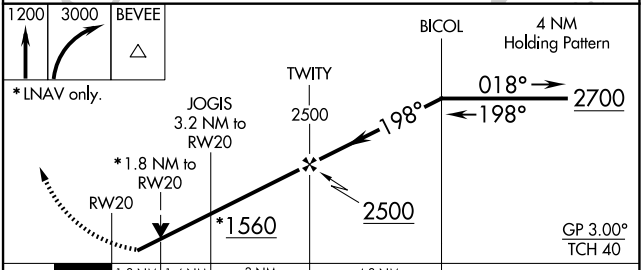
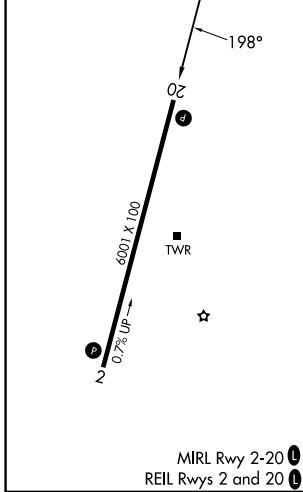
⚠ For uncompensated Baro-VNAV systems, LNAV/VNAV NA below -1.5°C (5°F) or above 54°C (130°F), DME/DME RNP-0.3 NA. When local altimeter setting not received, use Nashville Intl altimeter setting and increase all DA 40 feet and all visibilities 1/8 mile; increase all MDA 40 feet and LNAV Cats C and D visibility 1/8 mile. Circling NA east of Rwy 2-20. Baro-VNAV and VDP NA when using Nashville Intl altimeter setting. Helicopter visibility reduction below 3/4 SM NA.

MISSED APPROACH: Climb to 1200 then climbing right turn to 3000 direct BEVEE and hold.

ATIS 127.075	NASHVILLE APP CON 119.35 372.0	JOHN TUNE TOWER* 119.45 (CTAF)	GND CON 121.7	UNICOM 122.7
------------------------	--	--	-------------------------	------------------------



ELEV 501	D TDZE 501
----------	-------------------



CATEGORY	A	B	C	D
LPV DA		856-1¼	355 (400-1¼)	
LNAV/VNAV DA		1003-1¾	502 (600-1¾)	
LNAV MDA	1120-1	619 (700-1)	1120-1¾	619 (700-1¾)
CIRCLING	1200-1	699 (700-1)	1340-2½	1340-2¾
			839 (900-2¾)	839 (900-2¾)

SE-1, 11 JUN 2026 to 09 JUL 2026

SE-1, 11 JUN 2026 to 09 JUL 2026