

WAAS CH 40426 W29A	APP CRS 291°	Rwy ldg TDZE Apt Elev	8900 7078 7096
---------------------------------	------------------------	-----------------------------	---

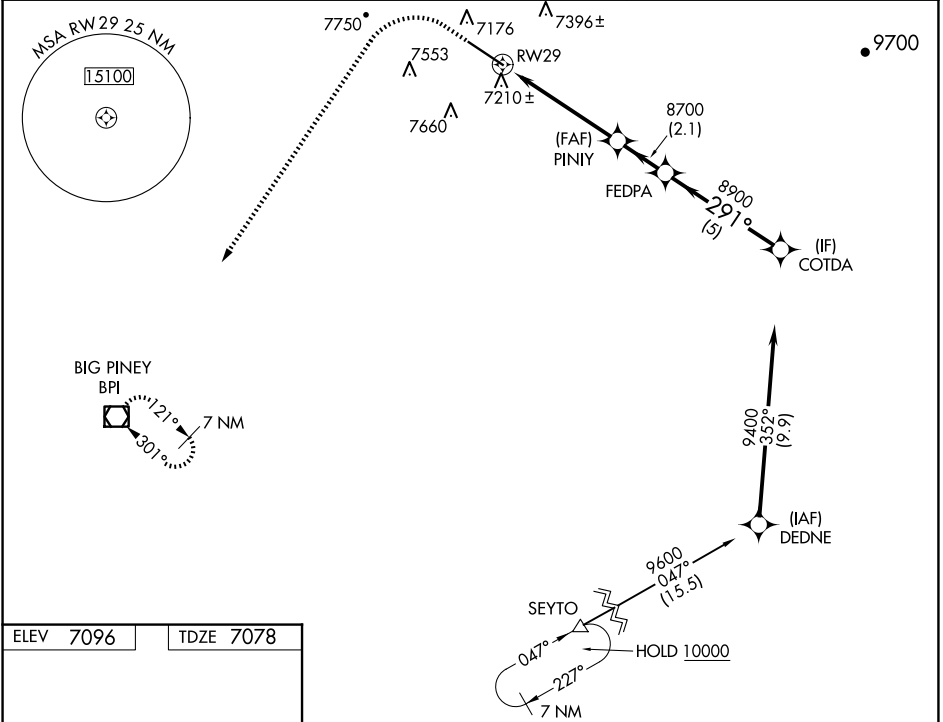
RNAV (GPS) RWY 29

RALPH WENZ FLD (PNA)

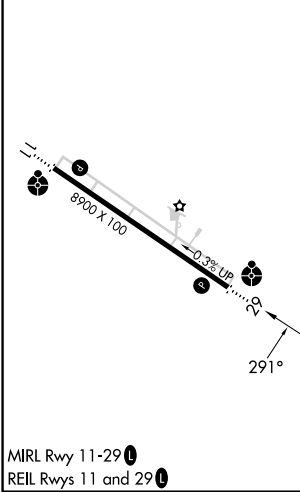
⚠ Baro-VNAV NA. When local altimeter setting not received, use Big Piney altimeter setting and increase LPV DA to 7386 feet and all visibilities ¼ SM; increase LNAV/VNAV DA to 7664 feet and all visibilities ½ SM; increase all MDA 60 feet and LNAV Cots C/D visibility ¼ SM. Circling NA south of Rwy 11/29. DME/DME RNP-0.3 NA. Helicopter visibility reduction below ¾ SM NA. VDP NA with Big Piney altimeter setting.

ODALS MISSED APPROACH: Climb to 7600 then climbing left turn to 10000 direct BPI VOR/DME and hold.

AWOS-3 118.325	SALT LAKE CENTER 128.35 239.25	UNICOM 122.8 (CTAF)
--------------------------	--	-------------------------------



ELEV 7096	TDZE 7078
------------------	------------------



7600	10000	BPI	VGSI and RNAV glidepath not coincident (VGSI Angle 2.83/TCH 40).	COTDA
*LNAV only.		*1.5 NM to RW29		
1.5 NM		3.5 NM	2.1 NM	5 NM
CATEGORY	A	B	C	D
LPV DA	7328-¾		250 (300-¾)	
LNAV/VNAV DA	7606-1¾		528 (600-1¾)	
LNAV MDA	7600-1 522 (600-1)		7600-1½ 522 (600-1½)	
CIRCLING	7640-1 544 (600-1)		7840-2¼ 744 (800-2¼) 7980-3 884 (900-3)	

MIRL Rwy 11-29
REIL Rwy 11 and 29

NW-1, 11 JUN 2026 to 09 JUL 2026

NW-1, 11 JUN 2026 to 09 JUL 2026