

# BARMY SIX DEPARTURE (RNAV)

SE-2, 11 JUN 2026 to 09 JUL 2026

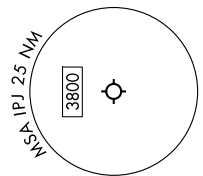
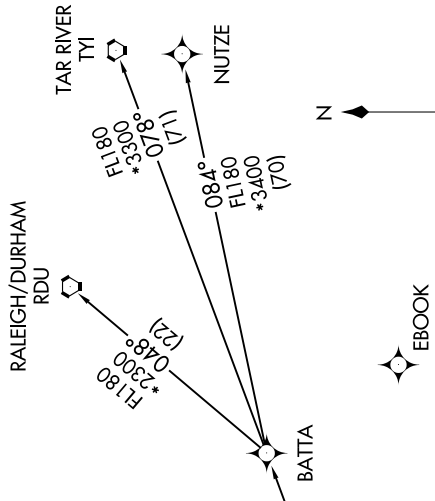
**TOP ALTITUDE:**  
**3000**

RNAV 1 - DME/DME/IRU or GPS.  
RADAR required.

CHARLOTTE DEP CON  
134.75 257.2  
AWOS-3  
119.675  
CLNC DEL (GCO)  
124.9

DATTO

NOTE: Turbojet only.  
NOTE: If unable to accept climb rates, advise ATC on initial contact.  
NOTE: Transponder code will be issued via PDC or Charlotte CLNC DEL.  
NOTE: Upon reaching 10000 MSL, accelerate to and maintain 280K, if unable advise ATC.



NOTE: Chart not to scale.

TAKEOFF MINIMUMS  
Rwys 5, 23: Standard.

## DEPARTURE ROUTE DESCRIPTION

**TAKEOFF RUNWAY 5:** Climb on heading 063° to 2000 before proceeding on course, then on heading assigned by ATC, thence...  
**TAKEOFF RUNWAY 23:** Climb on heading 243° to 2800 before turning left, then on heading assigned by ATC, thence...

... on RADAR vectors to MESHY, then on depicted route to BARMY. Then on assigned transition. Maintain 3000, expect filed altitude 10 minutes after departure.

- NUTIZE TRANSITION (BARMY6.NUTIZE)
- RALEIGH/DURHAM TRANSITION (BARMY6.RDU)
- TAR RIVER TRANSITION (BARMY6.TYI)

SE-2, 11 JUN 2026 to 09 JUL 2026