

BOBZY SIX DEPARTURE (RNAV)

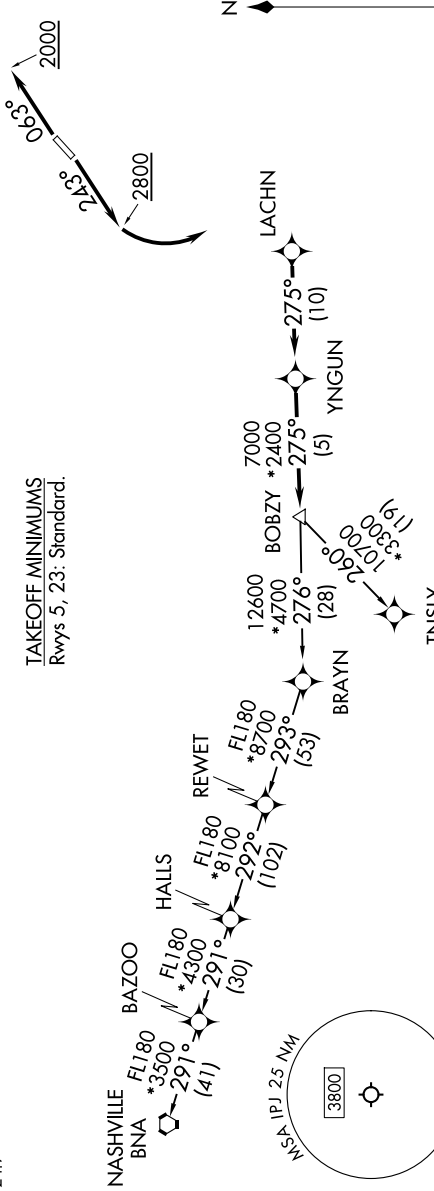
2020 JUN 11 09 2026 to 09 JUL 2026

TOP ALTITUDE:
3000

RNAV 1 - DME/DME/IRU or GPS.
RADAR required.

CHARLOTTE DEP CON
134.75 257.2
AWOS-3
119.675
CLINC DEL (GCO)
124.9

TAKEOFF MINIMUMS
Rwys 5, 23: Standard.



DEPARTURE ROUTE DESCRIPTION

TAKEOFF RUNWAY 5: Climb on heading 063° to 2000 before proceeding on course, then on heading assigned by ATC, thence. . .

TAKEOFF RUNWAY 23: Climb on heading 243° to 2800 before turning left, then on heading assigned by ATC, thence. . .

. . . on RADAR vectors to LACHN, then on depicted route to BOBZY, then on assigned transition. Maintain 3000, expect filed altitude 10 minutes after departure.

NASHVILLE TRANSITION (BOBZY6.BNA)
TNSLY TRANSITION (BOBZY6.TNSLY)

NOTE: Turbojet only.
NOTE: If unable to accept climb rates, advise ATC on initial contact.
NOTE: Transponder code will be issued via PDC or Charlotte CLNC DEL.
NOTE: Upon reaching 10000 MSL, accelerate to and maintain 280K, if unable advise ATC.

NOTE: Chart not to scale.

SE-2, 11 JUN 2026 to 09 JUL 2026