

(ESTRR6.ESTRR) 26134

AL-6894 (FAA)

LINCOLN COUNTY RGNL (IPJ)
LINCOLNTON, NORTH CAROLINA

ESTRR SIX DEPARTURE (RNAV)

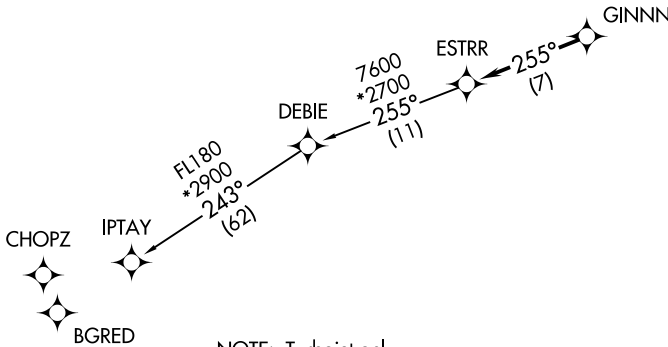
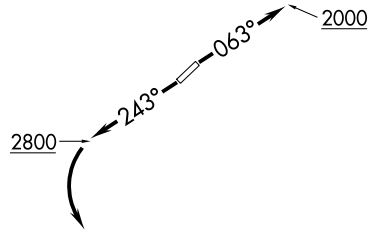
CHARLOTTE DEP CON
134.75 257.2
AWOS-3
119.675
CLNC DEL (GCO)
124.9

RNAV 1 - DME/DME/IRU or GPS.

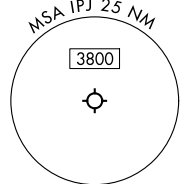
RADAR required.

**TOP ALTITUDE:
3000**

TAKEOFF MINIMUMS
Rwys 5, 23: Standard.



- NOTE: Turbojet only.
- NOTE: If unable to accept climb rates, advise ATC on initial contact.
- NOTE: Transponder code will be issued via PDC or CLT CLNC DEL.
- NOTE: Upon reaching 10000 MSL, accelerate to and maintain 280K, if unable advise ATC.



NOTE: Chart not to scale.



DEPARTURE ROUTE DESCRIPTION

TAKEOFF RUNWAY 5: Climb on heading 063° to 2000 before proceeding on course, then on heading assigned by ATC, thence. . .

TAKEOFF RUNWAY 23: Climb on heading 243° to 2800 before turning left, then on heading assigned by ATC, thence. . .

. . .for RADAR vectors to GINNN, then on track 255° to ESTRR, then on IPTAY Transition. Maintain 3000, expect filed altitude 10 minutes after departure.

IPTAY TRANSITION (ESTRR6.IPTAY)

ESTRR SIX DEPARTURE (RNAV)
(ESTRR6.ESTRR) 14MAY26

LINCOLNTON, NORTH CAROLINA
LINCOLN COUNTY RGNL (IPJ)

SE-2, 11 JUN 2026 to 09 JUL 2026

SE-2, 11 JUN 2026 to 09 JUL 2026