

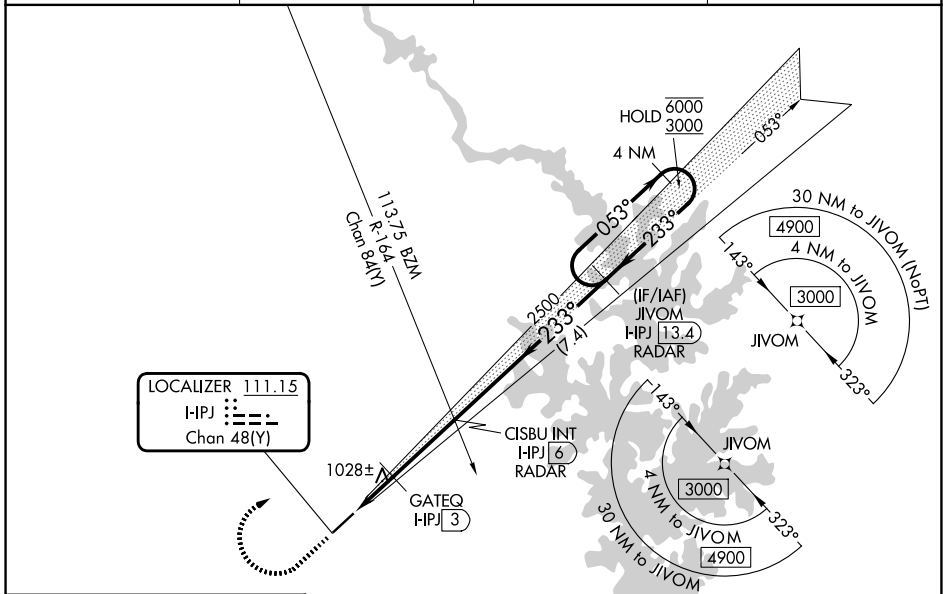
LOC/DME I-IPJ <b>111.15</b> Chan 48(Y)	APP CRS <b>233°</b>	Rwy Ldg TDZE Apt Elev	<b>5501</b> <b>872</b> <b>878</b>
--	------------------------	-----------------------------	---

# ILS Y or LOC Y RWY 23

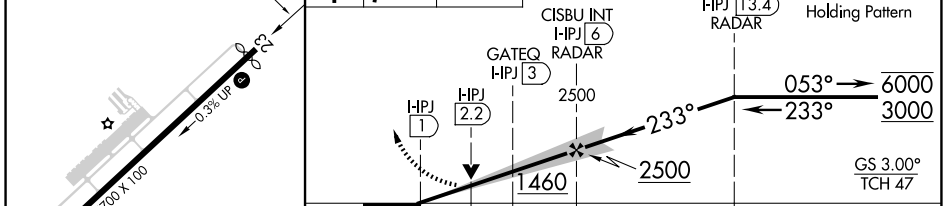
LINCOLN COUNTY RGNL (IPJ)

RNP APCH - GPS.	<p>▼ VDP NA when using CLT altimeter setting. Rwy 23 helicopter visibility reduction below <math>\frac{3}{4}</math> SM NA. When local altimeter setting not received, use CLT altimeter setting: increase S-ILS 23 DA to 1213 feet and visibilities <math>\frac{1}{8}</math> SM; increase all MDAs 80 feet and S-LOC 23 visibility Cats C/D <math>\frac{1}{8}</math> SM and Circling visibility Cats C/D <math>\frac{1}{4}</math> SM; increase GATEQ Fix Minimums S-LOC visibility Cats C/D and Circling visibility Cats C/D <math>\frac{1}{4}</math> SM.</p>	MISSED APPROACH: Climb to 1600 then climbing right turn to 3100 direct JIVOM and hold.
-----------------	---	--

AWOS-3 <b>119.675</b>	CHARLOTTE APP CON <b>134.75 257.2</b>	CLNC DEL (GCO) <b>124.9</b>	UNICOM <b>123.05 (CTAF) 0</b>
--------------------------	--	--------------------------------	----------------------------------



ELEV 878	TDZE 872	1600	3100	JIVOM HPJ   13.4
----------	----------	------	------	---------------------



CATEGORY	A	B	C	D
S-ILS 23	1149- $\frac{7}{8}$ 277 (300- $\frac{7}{8}$ )			
S-LOC 23	1460-1	588 (600-1)	1460-1 $\frac{3}{4}$ 588 (600-1 $\frac{3}{4}$ )	
CIRCLING	1460-1	582 (600-1)	1660-2 $\frac{1}{4}$ 782 (800-2 $\frac{1}{4}$ )	1660-2 $\frac{1}{2}$ 782 (800-2 $\frac{1}{2}$ )
GATEQ FIX MINIMUMS				
S-LOC 23	1280-1	408 (500-1)	1280-1 $\frac{1}{8}$ 408 (500-1 $\frac{1}{8}$ )	
CIRCLING	1400-1 522 (600-1)	1440-1 562 (600-1)	1660-2 $\frac{1}{4}$ 782 (800-2 $\frac{1}{4}$ )	1660-2 $\frac{1}{2}$ 782 (800-2 $\frac{1}{2}$ )

SE-2, 11 JUN 2026 to 09 JUL 2026

SE-2, 11 JUN 2026 to 09 JUL 2026