

LOC/DME I-IPJ <b>111.15</b> Chan 48(Y)	APP CRS <b>233°</b>	Rwy Ldg TDZE Apt Elev	<b>5501</b> <b>872</b> <b>878</b>
--	------------------------	-----------------------------	---

# ILS Z or LOC Z RWY 23

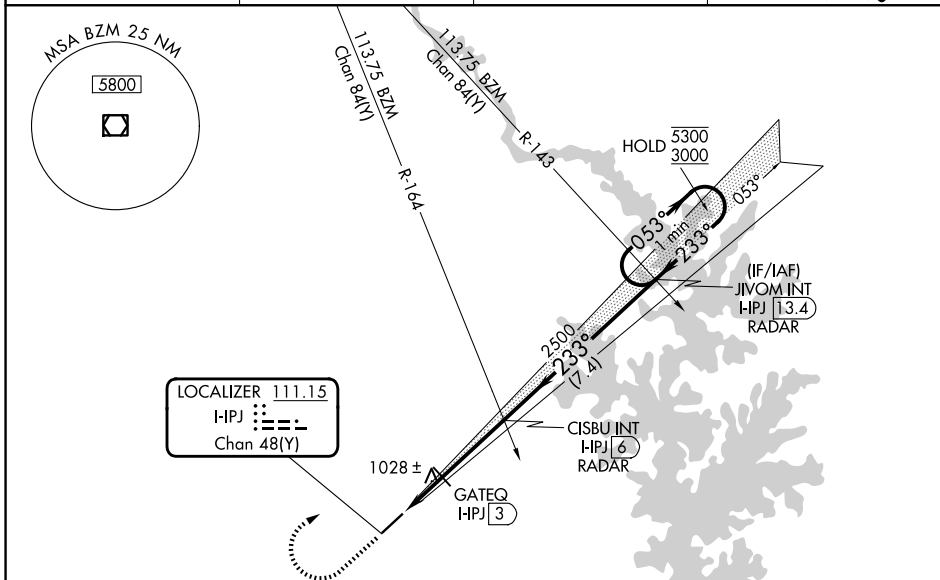
LINCOLN COUNTY RGNL (IPJ)

RADAR or RNAV required for procedure entry.

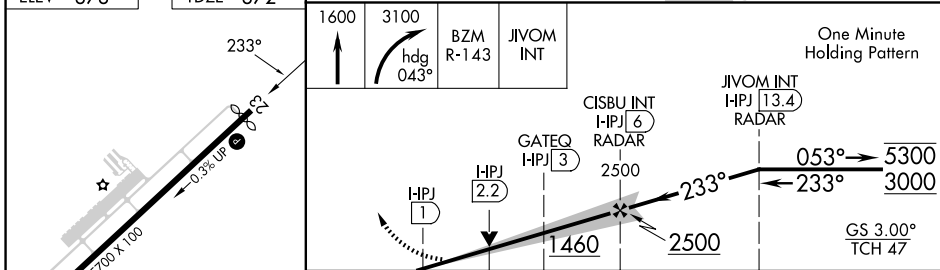
**⚠** VDP NA when using CLT altimeter setting. Rwy 23 helicopter visibility reduction below 3/4 SM NA. When local altimeter setting not received, use CLT altimeter setting: increase S-ILS 23 DA to 1213 feet and all visibilities 1/8 SM; increase all MDAs 80 feet and S-LOC 23 visibility Cats C/D 1/8 SM and Circling visibility Cats C/D 1/4 SM; increase GATEQ Fix Minimums S-LOC visibility Cats C/D and Circling visibility Cats C/D 1/4 SM.

MISSED APPROACH: Climb to 1600 then climbing right turn to 3100 on heading 043° and BZM VOR/DME R-143 to JIVOM INT/I-IPJ 13.4 DME/RADAR and hold.

AWOS-3 <b>119.675</b>	CHARLOTTE APP CON <b>134.75 257.2</b>	CLNC DEL (GCO) <b>124.9</b>	UNICOM <b>123.05 (CTAF) 0</b>
--------------------------	--	--------------------------------	----------------------------------



ELEV 878	TDZE 872
----------	----------



REL Rws 5 and 23 MIRL Rwy 5-23	1600	3100	BZM R-143	JIVOM INT	One Minute Holding Pattern
	↑	hdg 043°			
			CISBU INT HPJ (6) RADAR	JIVOM INT HPJ (13.4) RADAR	
			GATEQ HPJ (3)		
			2500	233°	5300
			1460	← 233°	3000
					GS 3.00° TCH 47
			1.2 NM	0.9 NM	3 NM
			7.4 NM		
CATEGORY	A		B		C
S-ILS 23	1149-7/8 277 (300-7/8)				
S-LOC 23	1460-1	588 (600-1)	1460-1 3/4	588 (600-1 3/4)	
CIRCLING	1460-1	582 (600-1)	1660-2 1/4	782 (800-2 1/4)	1660-2 1/2
			782 (800-2 1/4)	782 (800-2 1/2)	
GATEQ FIX MINIMUMS					
S-LOC 23	1280-1	408 (500-1)	1280-1 1/8	408 (500-1 1/8)	
CIRCLING	1400-1	522 (600-1)	1440-1	562 (600-1)	1660-2 1/2
			782 (800-2 1/4)	782 (800-2 1/2)	

SE-2, 11 JUN 2026 to 09 JUL 2026

SE-2, 11 JUN 2026 to 09 JUL 2026