

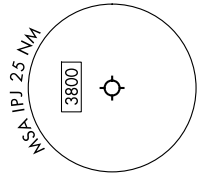
JOJO SIX DEPARTURE (RNAV)

SE-2, 11 JUN 2026 to 09 JUL 2026

TOP ALTITUDE:
3000

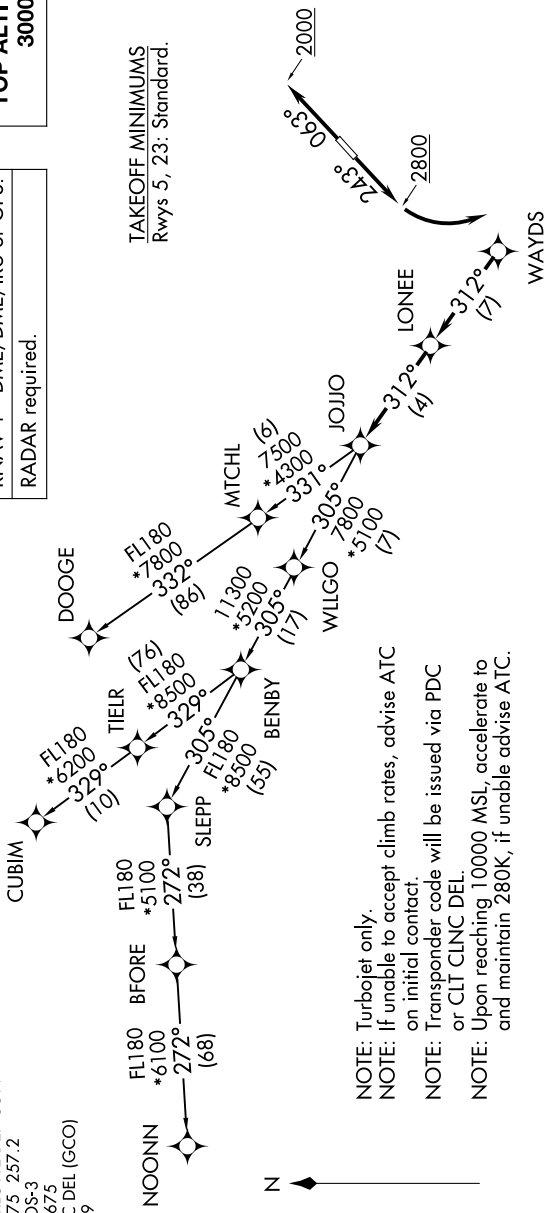
RNAV 1 - DME/DME/IRU or GPS.
RADAR required.

TAKEOFF MINIMUMS
Rwys 5, 23: Standard.



NOTE: Chart not to scale.

CHARLOTTE DEP CON
134.75 257.2
AWOS-3
119.675
CLNC DEL (GCO)
124.9



- NOTE: Turbojet only.
- NOTE: If unable to accept climb rates, advise ATC on initial contact.
- NOTE: Transponder code will be issued via PDC or CLT CLNC DEL.
- NOTE: Upon reaching 10000 MSL, accelerate to and maintain 280K, if unable advise ATC.

DEPARTURE ROUTE DESCRIPTION

TAKEOFF RUNWAY 5: Climb on heading 063° to 2000 before proceeding on course, then on heading assigned by ATC, thence. . .

TAKEOFF RUNWAY 23: Climb on heading 243° to 2800 before turning left, then on heading assigned by ATC, thence. . .

. . . for RADAR vectors to WAYDS, then on depicted route to JOJJO. Then on assigned transition. Maintain 3000, expect filed altitude 10 minutes after departure.

- CUBIM TRANSITION (JOJO6.CUBIM)
- DOOGE TRANSITION (JOJO6.DOOGE)
- NOONN TRANSITION (JOJO6.NOONN)

JOJO SIX DEPARTURE (RNAV)

SE-2, 11 JUN 2026 to 09 JUL 2026