

(KWEEN6.KWEEN) 26134

AL-6894 (FAA)

LINCOLN COUNTY RGNL (IPJ)  
LINCOLNTON, NORTH CAROLINA

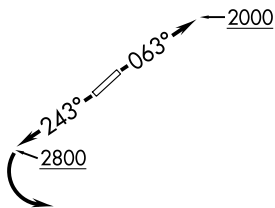
# KWEEN SIX DEPARTURE (RNAV)

CHARLOTTE DEP CON  
134.75 257.2  
AWOS-3  
119.675  
CLNC DEL (GCO)  
124.9

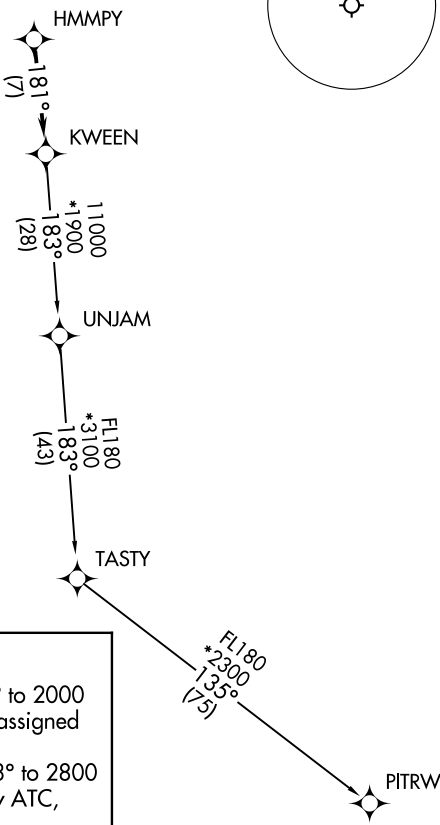
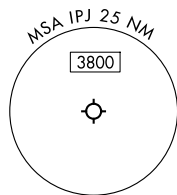
**TOP ALTITUDE:  
3000**

RNAV 1 - DME/DME/IRU or GPS.

RADAR required.



**TAKEOFF MINIMUMS**  
Rwys 5, 23: Standard.



- NOTE: Turbojet only.
- NOTE: Transponder code will be issued via PDC or CLT CLNC DEL.
- NOTE: If unable to accept climb rates, advise ATC on initial contact.
- NOTE: Upon reaching 10000 MSL, accelerate to and maintain 280K, if unable advise ATC.

**DEPARTURE ROUTE DESCRIPTION**

**TAKEOFF RUNWAY 5:** Climb on heading 063° to 2000 before proceeding on course, then on heading assigned by ATC, thence. . .

**TAKEOFF RUNWAY 23:** Climb on heading 243° to 2800 before turning left, then on heading assigned by ATC, thence. . .

. . .for RADAR vectors to HMMPY, then on track 181° to KWEEN. Then on assigned transition. Maintain 3000, expect filed altitude 10 minutes after departure.

PITRW TRANSITION (KWEEN6.PITRW)  
UNJAM TRANSITION (KWEEN6.UNJAM)

NOTE: Chart not to scale.

SE-2, 11 JUN 2026 to 09 JUL 2026

SE-2, 11 JUN 2026 to 09 JUL 2026

**KWEEN SIX DEPARTURE (RNAV)**  
(KWEEN6.KWEEN) 14MAY26

LINCOLN COUNTY RGNL (IPJ)  
LINCOLNTON, NORTH CAROLINA