

WAAS CH <b>78408</b> <b>W05A</b>	APP CRS <b>053°</b>	Rwy Ldg TDZE Apt Elev	<b>5500</b> <b>878</b> <b>878</b>
--	------------------------	-----------------------------	---

# RNAV (GPS) RWY 5

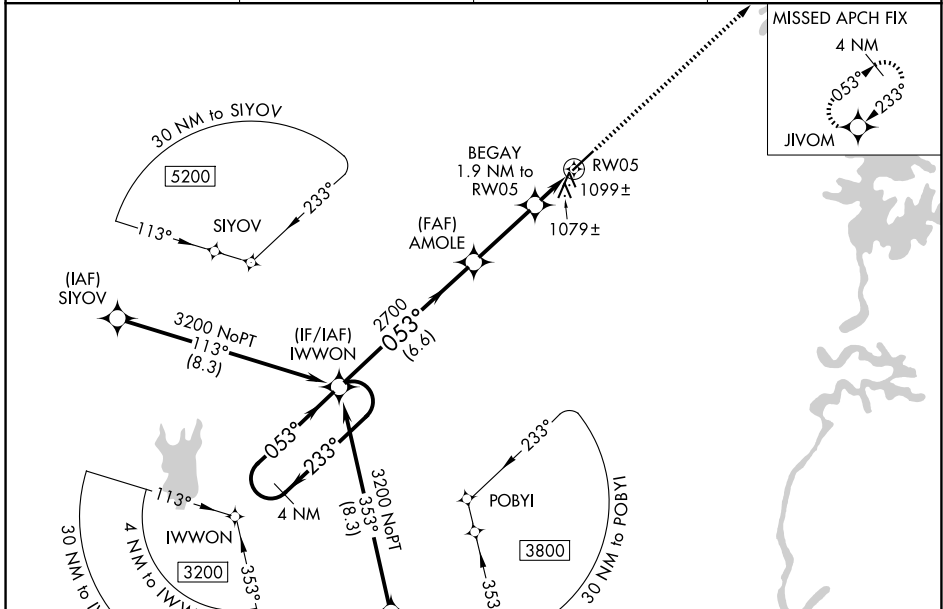
LINCOLN COUNTY RGNL (IPJ)

RNP APCH.

**▼** When local altimeter setting not received, use Charlotte altimeter setting: increase LPV DA to 1395 feet, LNAV/VNAV DA to 1463 feet and visibility LNAV/VNAV ¼ SM; increase all MDAs 80 feet and visibility Cats C and D ¼ SM. Rwy 5 helicopter visibility reduction below ¼ SM NA. Baro-VNAV and VDP NA when using Charlotte altimeter setting. For uncompensated Baro-VNAV systems, LNAV/VNAV NA below -16°C or above 47°C.

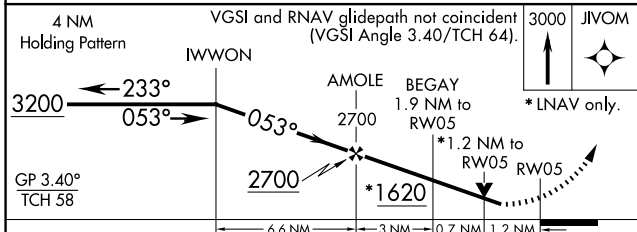
MISSED APPROACH: Climb to 3000 direct JIVOM and hold.

AWOS-3 <b>119.675</b>	CHARLOTTE APP CON <b>134.75 257.2</b>	CLNC DEL (GCO) <b>124.9</b>	UNICOM <b>123.05 (CTAF) 0</b>
--------------------------	--	--------------------------------	----------------------------------



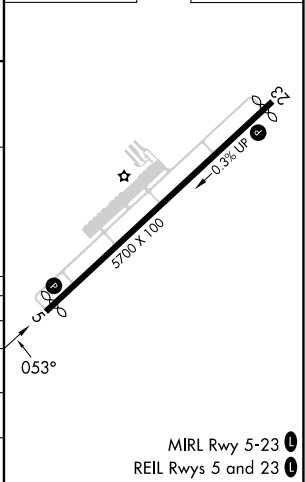
SE-2, 11 JUN 2026 to 09 JUL 2026

SE-2, 11 JUN 2026 to 09 JUL 2026



ELEV 878	TDZE 878
----------	----------

CATEGORY	A	B	C	D
LPV DA	1332-1 <sup>3</sup> / <sub>8</sub>	454 (500-1 <sup>3</sup> / <sub>8</sub> )		NA
LNAV/VNAV DA	1400-1 <sup>1</sup> / <sub>2</sub>	522 (600-1 <sup>1</sup> / <sub>2</sub> )		NA
LNAV MDA	1360-1	482 (500-1)	1360-1 <sup>3</sup> / <sub>8</sub>	482 (500-1 <sup>3</sup> / <sub>8</sub> )
CIRCLING	1400-1 522 (600-1)	1440-1 562 (600-1)	1660-2 <sup>1</sup> / <sub>4</sub> 782 (800-2 <sup>1</sup> / <sub>4</sub> )	1660-2 <sup>1</sup> / <sub>2</sub> 782 (800-2 <sup>1</sup> / <sub>2</sub> )



MIRL Rwy 5-23 0  
REIL Rws 5 and 23 0