

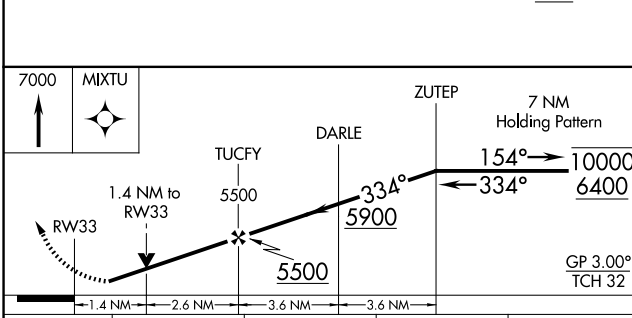
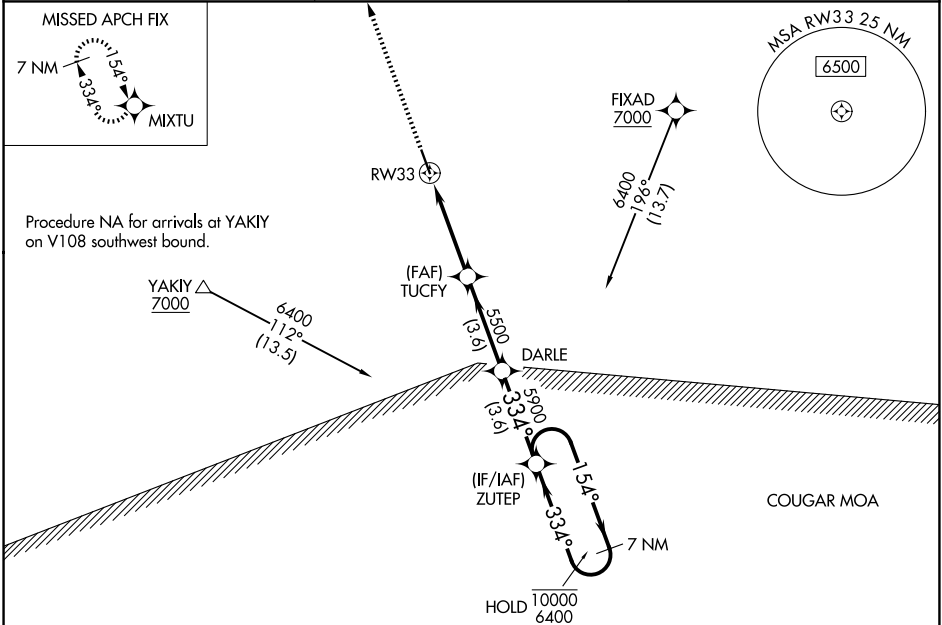
WAAS CH 65844 W33A	APP CRS 334°	Rwy Ldg 5199 TDZE 4205 Apt Elev 4218
--	------------------------	---

RNAV (GPS) RWY 33

KIT CARSON COUNTY (ITR)

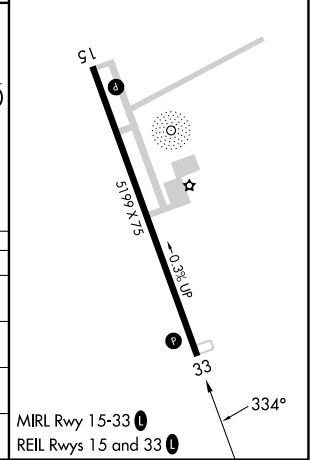
RNP APCH-GPS.	MISSED APPROACH: Climb to 7000 direct MIXTU and hold, continue climb-in-hold to 7000.
<p>▼ Rwy 33 helicopter visibility reduction below $\frac{3}{4}$ SM NA. For uncompensated Baro-VNAV systems, LNAV/VNAV NA below -9°C or above 54°C.</p> <p>▲</p>	

ASOS 135.225	DENVER CENTER 132.7 226.675	UNICOM 122.8 (CTAF) ①
------------------------	---------------------------------------	---------------------------------



ELEV 4218	TDZE 4205
-----------	-----------

CATEGORY	A	B	C	D
LPV DA		4455-1	250 (300-1)	
LNAV/VNAV DA		4455-1	250 (300-1)	
LNAV MDA	4680-1	475 (500-1)	4680-1 $\frac{3}{8}$	475 (500-1 $\frac{3}{8}$)
CIRCLING	4680-1 462 (500-1)	4700-1 482 (500-1)	4860-1 $\frac{3}{4}$ 642 (700-1 $\frac{3}{4}$)	4860-2 642 (700-2)



SW-1, 11 JUN 2026 to 09 JUL 2026

SW-1, 11 JUN 2026 to 09 JUL 2026