

APP CRS	Rwy Ldg	4266
292°	TDZE	831
	Apt Elev	839

RNAV (GPS) RWY 29

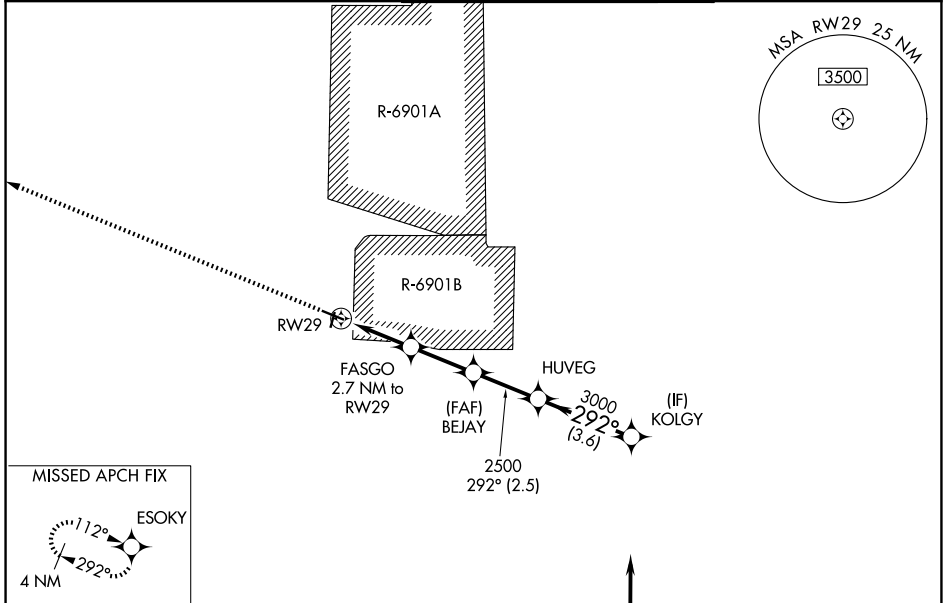
SPARTA/FORT MC COY (CMY)

RNP APCH - GPS.

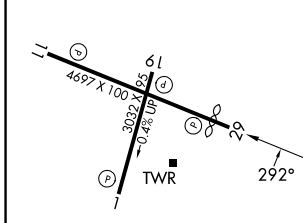
▼ Rwy 29 helicopter visibility reduction below 1 SM NA. For uncompensated Baro-VNAV systems, LNAV/VNAV NA below -16°C or above 54°C. Straight-in Rwy 29, Circling Rwy 11, 19, 29 NA at night. Procedure NA when R-6901B is active.

▲ MISSED APPROACH: Climb to 4000 direct ESOKY and hold.

ASOS 119.775	VOLK APP CON ★ 135.25 244.875	SPARTA/MC COY TOWER ★ 124.6 (CTAF) 254.375	GND CON 123.625
------------------------	-----------------------------------------	------------------------------------------------------	---------------------------



ELEV	839	TDZE	831
------	------------	------	------------



4000	↑	ESOKY	↑	ESOKY
		FASGO	BEJAY	HUVEG
		2.7 NM to RWY 29		
		1720	2500	3000
				3200
				292°
				GP 3.00°
				TCH 40

CATEGORY	A	B	C	D
LNAV/VNAV	DA	1263-1¼ 432 (500-1¼)		
LNAV MDA	1320-1	489 (500-1)	1320-1¾	489 (500-1¾)
CIRCLING	1520-1 681 (700-1)	1560-1 721 (800-1)	1620-2¼ 781 (800-2¼)	1880-3 1041 (1100-3)

SPARTA, WISCONSIN
Amdt 2 02OCT25

43°58'N-90°44'W

RNAV (GPS) RWY 29

EC-3, 11 JUN 2026 to 09 JUL 2026

EC-3, 11 JUN 2026 to 09 JUL 2026