

VORTAC ODI 117.9 Chan 126	APP CRS 083°	Rwy Ldg TDZE Apt Elev	4697 829 839
---	------------------------	-----------------------------	---

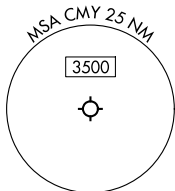
VOR RWY 11
SPARTA/FORT MC COY (CMY)

DME required.

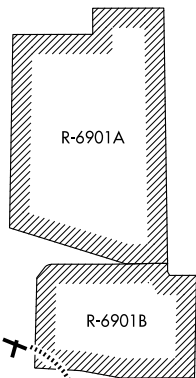
▼ Rwy 11 helicopter visibility reduction below 1 SM NA. When local altimeter setting not received, use LSE altimeter setting and increase all MDAs 80 feet.
▲ Straight-in Rwy 11 NA at night, Circling Rwy 11, 19, 29 NA at night.

MISSED APPROACH: Climbing right turn to 4000 on heading 295° and on ODI R-083 to ODI VORTAC and hold.

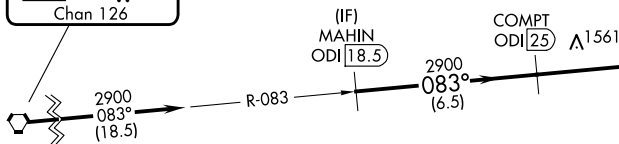
ASOS 119.775	VOLK APP CON ★ 135.25 244.875	SPARTA/MC COY TOWER ★ 124.6 (CTAF) 254.375	GND CON 123.625
------------------------	---	--	---------------------------



Procedure NA for arrivals at ODI VOR/DME on V82, V170, and V510 northwest bound.

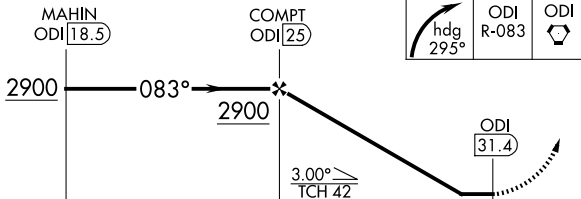
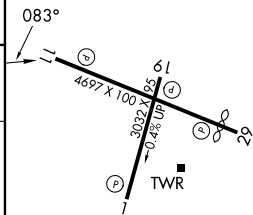


IAF
NODINE
117.9 ODI
Chan 126



MISSED APCH FIX
NODINE
ODI
117.9
Chan 126
← R-263 → 083° → 263°

ELEV 839	TDZE 829
----------	----------



	6.5 NM		6.4 NM	
CATEGORY	A	B	C	D
S-11	1960-1¼ 1131 (1200-1¼)	1960-1½ 1131 (1200-1½)	1960-3	1131 (1200-3)
CIRCLING	1960-1¼ 1121 (1200-1¼)	1960-1½ 1121 (1200-1½)	1960-3	1121 (1200-3)

REIL Rws 11 and 29
MIRL Rws 1-19 and 11-29

EC-3, 11 JUN 2026 to 09 JUL 2026

EC-3, 11 JUN 2026 to 09 JUL 2026