

# RNAV (GPS) RWY 20

POSSUM KINGDOM (F35)

APP CRS <b>204°</b>	Rwy Ldg TDZE Apt Elev	<b>3500</b> <b>1008</b> <b>1008</b>
------------------------	-----------------------------	---

RNP APCH-GPS

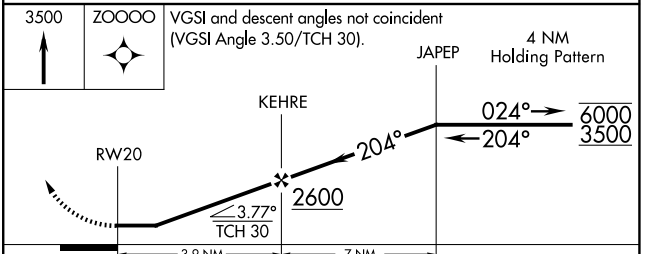
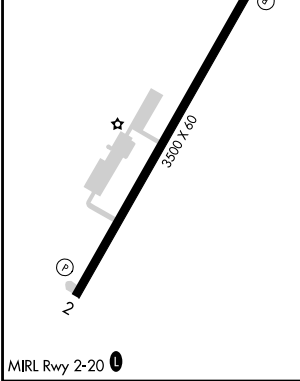
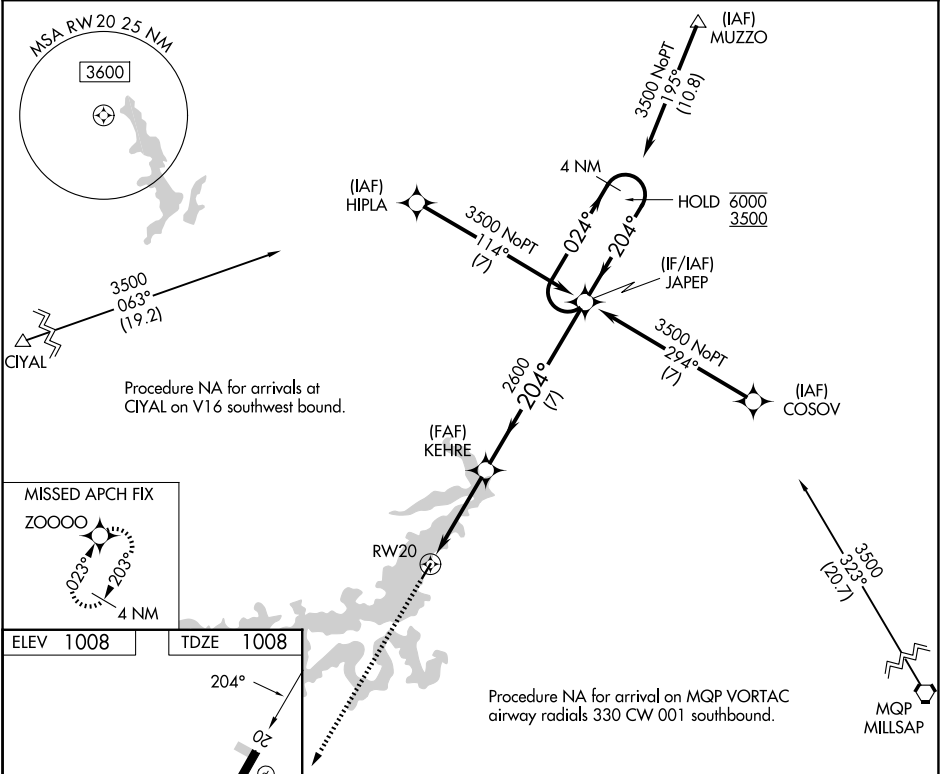
Procedure NA at night. Rwy 20 helicopter visibility reduction below 1 SM NA.  
 Use MWL altimeter setting; when not received, use LUD altimeter setting and increase all MDAs 80 feet and LNAV visibility Cat B/C 1/4 SM, and Circling visibility Cat C 1/2 SM.

MISSED APPROACH: Climb to 3500 direct ZOOOO and hold.

MWL ASOS  
**135.075**

FORT WORTH CENTER  
**127.0 360.6**

CTAF  
**122.9**



CATEGORY	A	B	C	D
LNAV MDA	1680-1	672 (700-1)	1680-1 <sup>7</sup> / <sub>8</sub> 672 (700-1 <sup>7</sup> / <sub>8</sub> )	NA
CIRCLING	1700-1 692 (700-1)	1860-1 <sup>1</sup> / <sub>4</sub> 852 (900-1 <sup>1</sup> / <sub>4</sub> )	1880-2 <sup>1</sup> / <sub>2</sub> 872 (900-2 <sup>1</sup> / <sub>2</sub> )	NA

SC-2, 11 JUN 2026 to 09 JUL 2026

SC-2, 11 JUN 2026 to 09 JUL 2026