

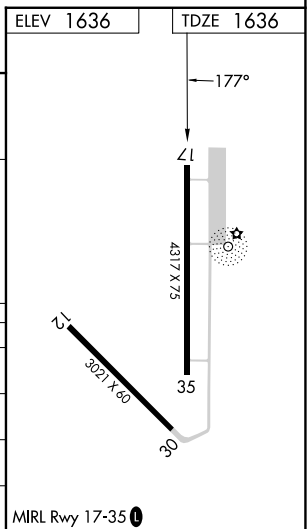
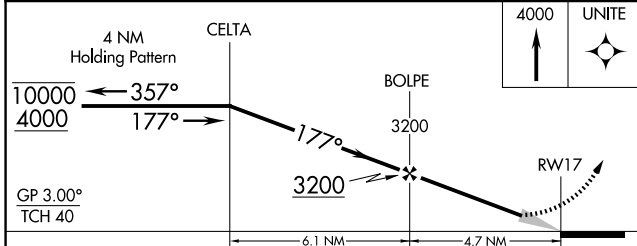
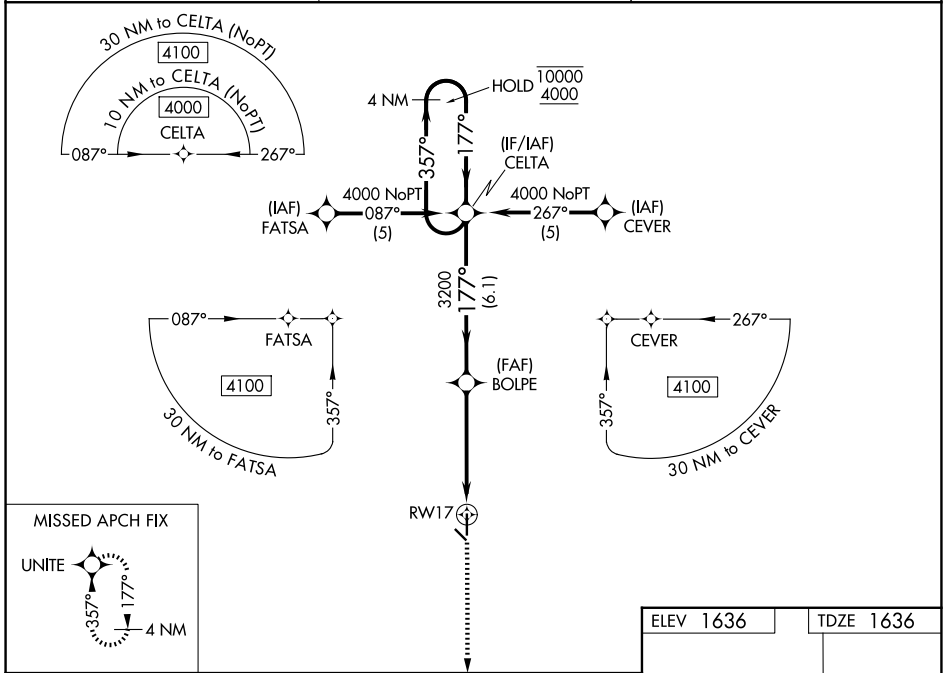
WAAS CH 69414 W17A	APP CRS 177°	Rwy Ldg 4317 TDZE 1636 Apt Elev 1636
--	------------------------	---

RNAV (GPS) RWY 17

FAIRMONT STATE (F^MMZ)

RNP APCH - GPS.	<p>⚠ NA Circling to Rwy 12, 30 NA at night. Baro-VNAV NA. Use York altimeter setting; when not received use Hebron altimeter setting and increase LPV DA to 1965 feet and all visibilities $\frac{1}{8}$ SM; increase LNAV/VNAV DA to 2074 feet and all visibilities $\frac{1}{8}$ SM; and increase all MDAs 40 feet.</p>	<p>MISSED APPROACH: Climb to 4000 direct UNITE and hold.</p>

JYR AWOS-3 124.175	MINNEAPOLIS CENTER 119.4 278.8	CTAF 122.9
------------------------------	--	----------------------



CATEGORY	A	B	C	D
LPV DA	1934- $\frac{7}{8}$	298 (300- $\frac{7}{8}$)		NA
LNAV/VNAV DA	2043-1 $\frac{1}{8}$	407 (500-1 $\frac{1}{8}$)		NA
LNAV MDA	2240-1	604 (700-1)		NA
CIRCLING	2240-1	604 (700-1)		NA

NC-2, 11 JUN 2026 to 09 JUL 2026

NC-2, 11 JUN 2026 to 09 JUL 2026