

WAAS CH <b>48843</b> <b>W09A</b>	APP CRS <b>092°</b>	Rwy Ldg TDZE Apt Elev	<b>4300</b> <b>489</b> <b>494</b>
--	------------------------	-----------------------------	---

**RNAV (GPS) RWY 9**  
LOUISA COUNTY/FREEMAN FLD (LKU)

RNP APCH - GPS.

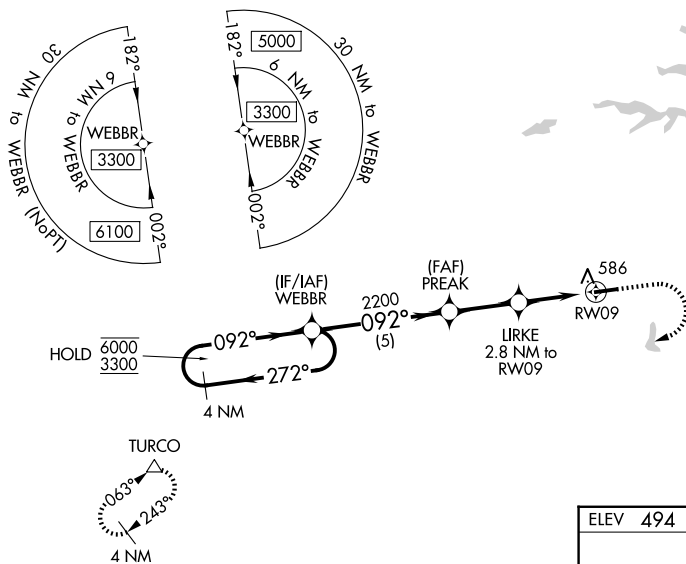
- ▼ Rwy 9 helicopter visibility reduction below 3/4 SM NA. Circling NA north of Rwy 9-27.
- ▲ For uncompensated Baro-VNAV systems, LNAV/VNAV NA below -15°C or above 54°C.
- Baro-VNAV and VDP NA when using OMH altimeter setting. When local altimeter setting not received, use OMH altimeter setting and increase LPV DA to 780 feet and all visibilities 1/8 SM, LNAV/VNAV DA to 789 feet and all visibilities 1/8 SM. Increase all MDAs 60 feet.

MISSED APPROACH: Climb to 1000 then climbing right turn to 3300 direct TURCO and hold.

AWOS-3  
**119,475**

POTOMAC APP CON  
**132.85 323.125**

UNICOM  
**122,975 (CTAF) 1**



NE-3, 11 JUN 2026 to 09 JUL 2026

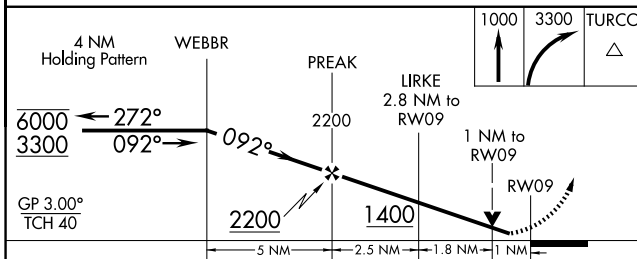
NE-3, 11 JUN 2026 to 09 JUL 2026

ELEV 494	TDZE 489
----------	----------

1000	3300	TURCO
------	------	-------

GP 3.00°  
TCH 40

REIL Rwy 9 and 27 1  
MIRL Rwy 9-27 1



CATEGORY	A	B	C	D
LPV DA	739-3/4	250 (300-3/4)		NA
LNAV/VNAV DA	748-3/4	259 (300-3/4)		NA
LNAV MDA	840-1	351 (400-1)		NA
CIRCLING	920-1 426 (500-1)	960-1 466 (500-1)		NA