

WAAS CH <b>82005</b> <b>W16A</b>	APP CRS <b>163°</b>	Rwy Ldg TDZE Apt Elev	<b>5000</b> <b>1515</b> <b>1535</b>
--	------------------------	-----------------------------	---

# RNAV (GPS) RWY 16

PICKENS COUNTY (JZP)

RNP APCH - GPS.

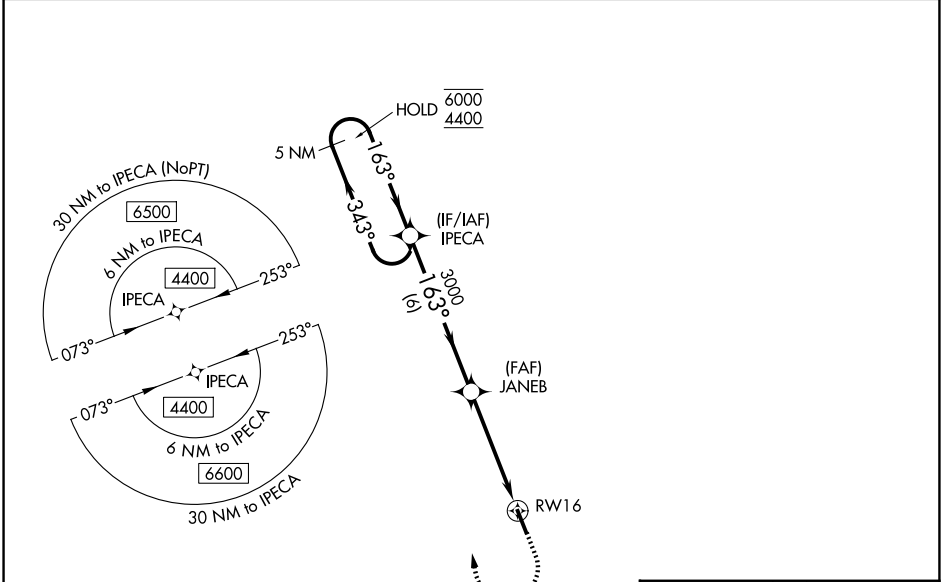
**⚠** Rwy 16 helicopter visibility reduction below  $\frac{3}{4}$  SM NA.  
For uncompensated Baro-VNAV systems, LNAV/VNAV NA below -18°C or above 54°C.

MISSED APPROACH: Climb to 3000 then climbing right turn to 4400 direct IPECA and hold.

AWOS-AV  
**120.025**

ATLANTA CENTER  
**133.1 342.425**

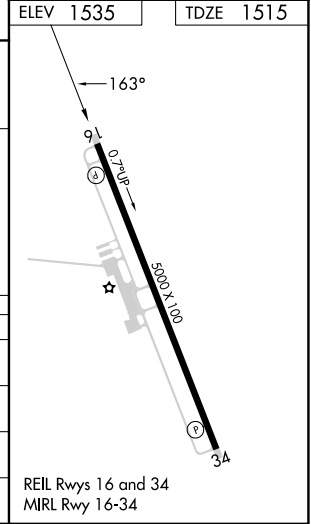
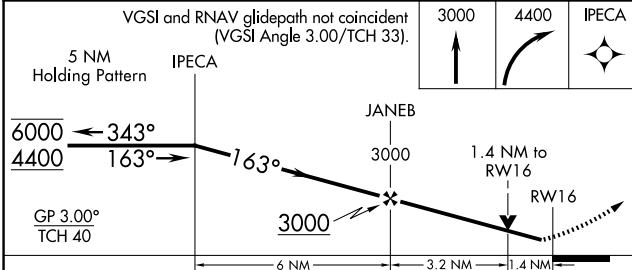
UNICOM  
**122.725 (CTAF)**



SE-4, 11 JUN 2026 to 09 JUL 2026

SE-4, 11 JUN 2026 to 09 JUL 2026

ELEV 1535 TDZE 1515



CATEGORY	A	B	C	D
LPV DA		1915-1 $\frac{1}{8}$	400 (400-1 $\frac{1}{8}$ )	
LNAV/VNAV DA		1980-1 $\frac{3}{8}$	465 (500-1 $\frac{3}{8}$ )	
LNAV MDA	1980-1	465 (500-1)	1980-1 $\frac{3}{8}$	465 (500-1 $\frac{3}{8}$ )
CIRCLING	1980-1 445 (500-1)	2360-1 $\frac{1}{4}$ 825 (900-1 $\frac{1}{4}$ )	2760-3	1225 (1300-3)

REIL Rwy 16 and 34  
MIRL Rwy 16-34