

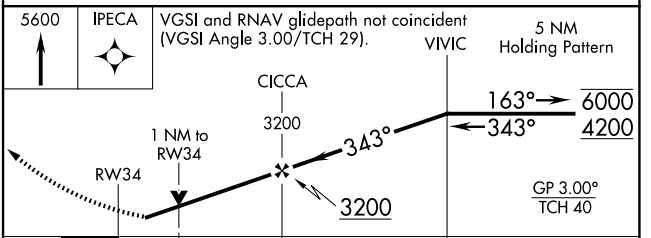
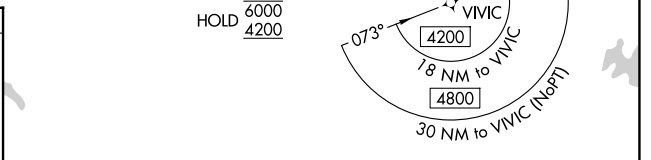
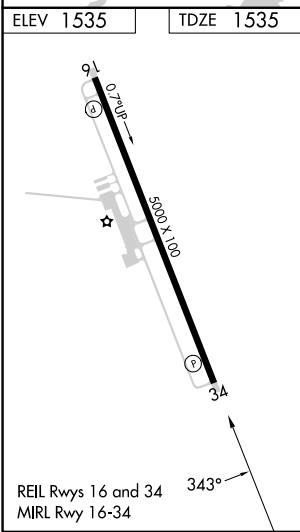
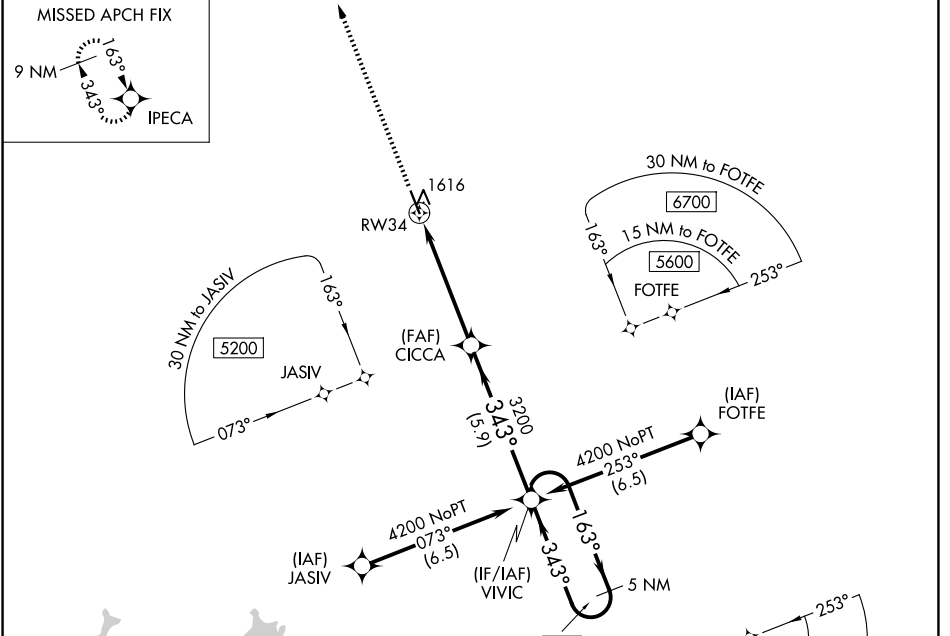
WAAS CH 77705 W34A	APP CRS 343°	Rwy Ldg TDZE 1535 Apt Elev 1535
--	------------------------	---

RNAV (GPS) RWY 34

PICKENS COUNTY (JZP)

RNP APCH - GPS.	MISSED APPROACH: Climb to 5600 direct IPECA and hold, continue climb-in-hold to 5600.
Rwy 34 helicopter visibility reduction below 3/4 SM NA.	

AWOS-AV 120.025	ATLANTA CENTER 133.1 342.425	UNICOM 122.725 (CTAF)
---------------------------	--	---------------------------------



CATEGORY	A	B	C	D
LPV DA		1789-7/8	254 (300-7/8)	NA
LNAV MDA		1880-1	345 (400-1)	NA
CIRCLING	2040-1 505 (600-1)	2380-1 1/4 845 (900-1 1/4)	2800-3 1265 (1300-3)	NA

SE-4, 11 JUN 2026 to 09 JUL 2026

SE-4, 11 JUN 2026 to 09 JUL 2026