

WAAS CH 72838 W28A	APP CRS 276°	Rwy Ldg TDZE Apt Elev	5002 236 240
--	------------------------	-----------------------------	---

RNAV (GPS) RWY 28

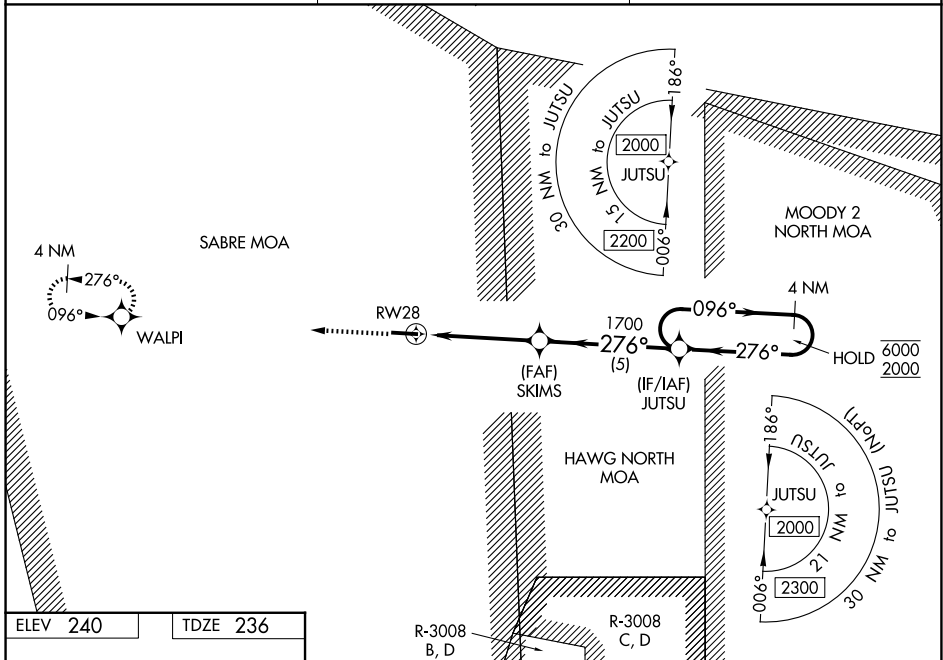
BERRIEN COUNTY (4J2)

RNP APCH - GPS.

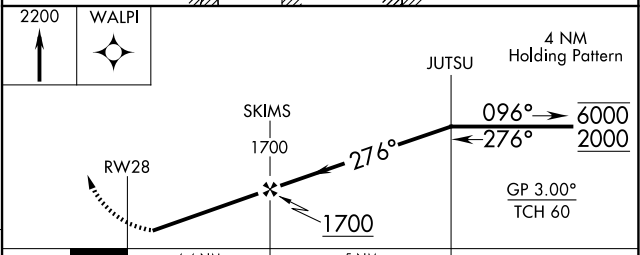
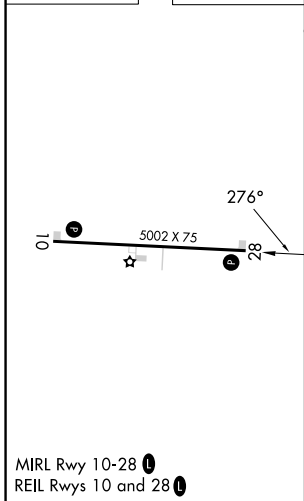
▼ Rwy 28 helicopter visibility reduction below 1 SM NA. Baro-VNAV NA. Straight-in Rwy 28 NA at night, Circling Rwy 28 NA at night. Use VAD altimeter setting; when not received, use DQH altimeter setting and increase LPV DA to 602 feet; increase LNAV/VNAV DA to 561 feet; increase all MDAs 40 feet and LNAV visibility Cat C ¼ SM, and Circling visibility Cat C ¼ SM.

MISSED APPROACH:
Climb to 2200 direct WALPI and hold.

KVAD ATIS ★ 142.6 273.5	VALDOSTA APP CON ★ 126.6 285.6	UNICOM 122.7 (CTAF) 0
-----------------------------------	--	---------------------------------



ELEV 240	TDZE 236
-----------------	-----------------



CATEGORY	A	B	C	D
LPV DA	578-1	342 (400-1)		NA
LNAV/VNAV DA	537-1	301 (300-1)		NA
LNAV MDA	740-1	504 (500-1)	740-1 ³ / ₈ 504 (500-1 ³ / ₈)	NA
CIRCLING	740-1 500 (500-1)	800-1 560 (600-1)	980-2 740 (800-2)	NA

SE-4, 11 JUN 2026 to 09 JUL 2026

SE-4, 11 JUN 2026 to 09 JUL 2026

MIRL Rwy 10-28 0
REIL Rwy 10 and 28 0