

# IZZ0 EIGHT DEPARTURE (RNAV)

AL-6915 (FAA)

GLENDALE RGNL (GEU)  
GLENDALE, ARIZONA

SW-4, 11 JUN 2026 to 09 JUL 2026

## TOP ALTITUDE: ASSIGNED BY ATC

LUKE DEP CON\*  
118.15 363.125  
PHOENIX DEP CON  
120.7 239.0  
ATIS  
119.425  
GND CON  
118.0  
GLENDALE TOWER\*  
121.0

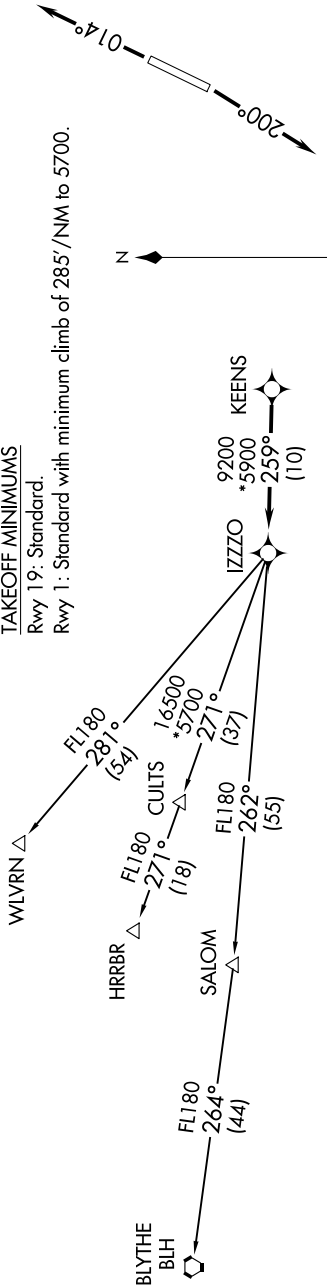
RNAV 1 - GPS.

RADAR required.

- NOTE: Turbojets and turboprops only.
- NOTE: Aircraft requesting FL220 and below must file BLYTHE Transition.
- NOTE: Turbojets landing LAX, file WLVRN Transition.
- NOTE: Aircraft landing other than LAX and turboprops landing at LAX: Requesting FL240 and above, file HRRBR Transition.
- NOTE: Aircraft departing KGEU and KGYR ATC assigned only.

### TAKEOFF MINIMUMS

Rwy 19: Standard.  
Rwy 1: Standard with minimum climb of 285'/NM to 5700.



### DEPARTURE ROUTE DESCRIPTION

**TAKEOFF RUNWAY 1:** Climb on heading 014° or as assigned by ATC, thence. . . .  
**TAKEOFF RUNWAY 19:** Climb on heading 200° or as assigned by ATC, thence. . . .  
 . . . for RADAR vectors to KEENS, then on track 259° to IZZO, then on (transition).  
 Maintain ATC assigned altitude, expect filed altitude 3 minutes after departure.

- BLYTHE TRANSITION (IZZ08.BLH)
- HRRBR TRANSITION (IZZ08.HRRBR)
- WLVRN TRANSITION (IZZ08.WLVRN)

NOTE: Chart not to scale.

# IZZ0 EIGHT DEPARTURE (RNAV)

SW-4, 11 JUN 2026 to 09 JUL 2026