

LALUZ SIX DEPARTURE (RNAV)

AL-6915 (FAA)

GLENDALE RGNL (GETU)
GLENDALE, ARIZONA

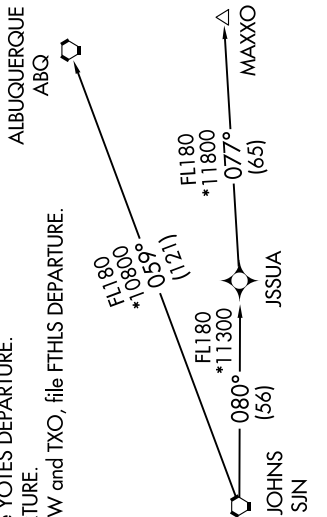
SW-4, 11 JUN 2026 to 09 JUL 2026

ATIS 119.425
 GND CON 118.0
 GLENDALE TOWER * 121.0
 LUKE DEP CON * 118.15 363.125
 PHOENIX DEP CON 120.7 239.0

NOTE: RNAV 1.
 NOTE: Turbojets and turboprops only.
 NOTE: RADAR required.
 NOTE: GPS required.
 NOTE: SJN TRANSITION for ABQ terminal arrivals only.
 NOTE: MAXXO TRANSITION ATC assigned only.
 NOTE: Aircraft filing over DEN, RSK, ALS, and points north of ALS, file YOTES DEPARTURE.
 NOTE: Aircraft filing over ABQ, CIM, FTI, and GCK, file LALUZ DEPARTURE.
 NOTE: Aircraft filing over ACH, IBL, ONM, CNX, PNH, MMB, TCC, IRW, and TXO, file FTHLS DEPARTURE.
 NOTE: Aircraft departing KGEU and KGYR ATC assigned only.

TAKEOFF MINIMUMS
 Rwy 1, 19: Standard.

TOP ALTITUDE: ASSIGNED BY ATC



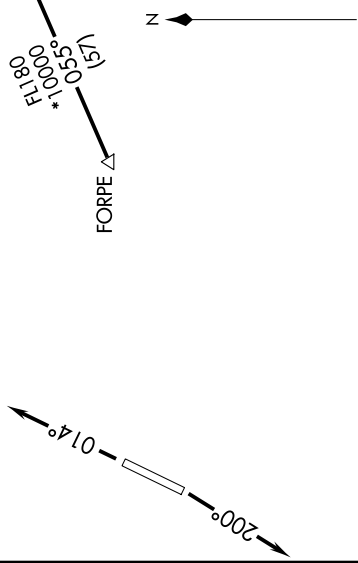
ALBUQUERQUE
ABQ

DEPARTURE ROUTE DESCRIPTION

∇ TAKEOFF RUNWAY 1: Climb heading 014° or as assigned by ATC, thence
 TAKEOFF RUNWAY 19: Climb heading 200° or as assigned by ATC, thence

. expect RADAR vectors to FORPE, then on track 055° to LALUZ, then on (transition). Maintain ATC assigned altitude, expect filed altitude 3 minutes after departure.

ALBUQUERQUE TRANSITION (LALUZ6.ABQ)
 MAXXO TRANSITION (LALUZ6.MAXXO)
 ST JOHNS TRANSITION (LALUZ6.SJN)



NOTE: Chart not to scale.

SW-4, 11 JUN 2026 to 09 JUL 2026