

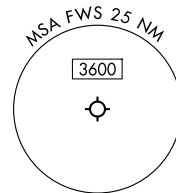
**TOP ALTITUDE:  
ASSIGNED BY ATC**

RNAV 1 - DME/DME/IRU or GPS required.

RADAR required.

LONE STAR DEP CON  
135.975 379.9  
ATIS  
120.025  
GND CON  
119.475  
SPINKS TOWER \*  
124.625 (CTAF)

NOTE: ALIAN Transition: ATC assigned only.

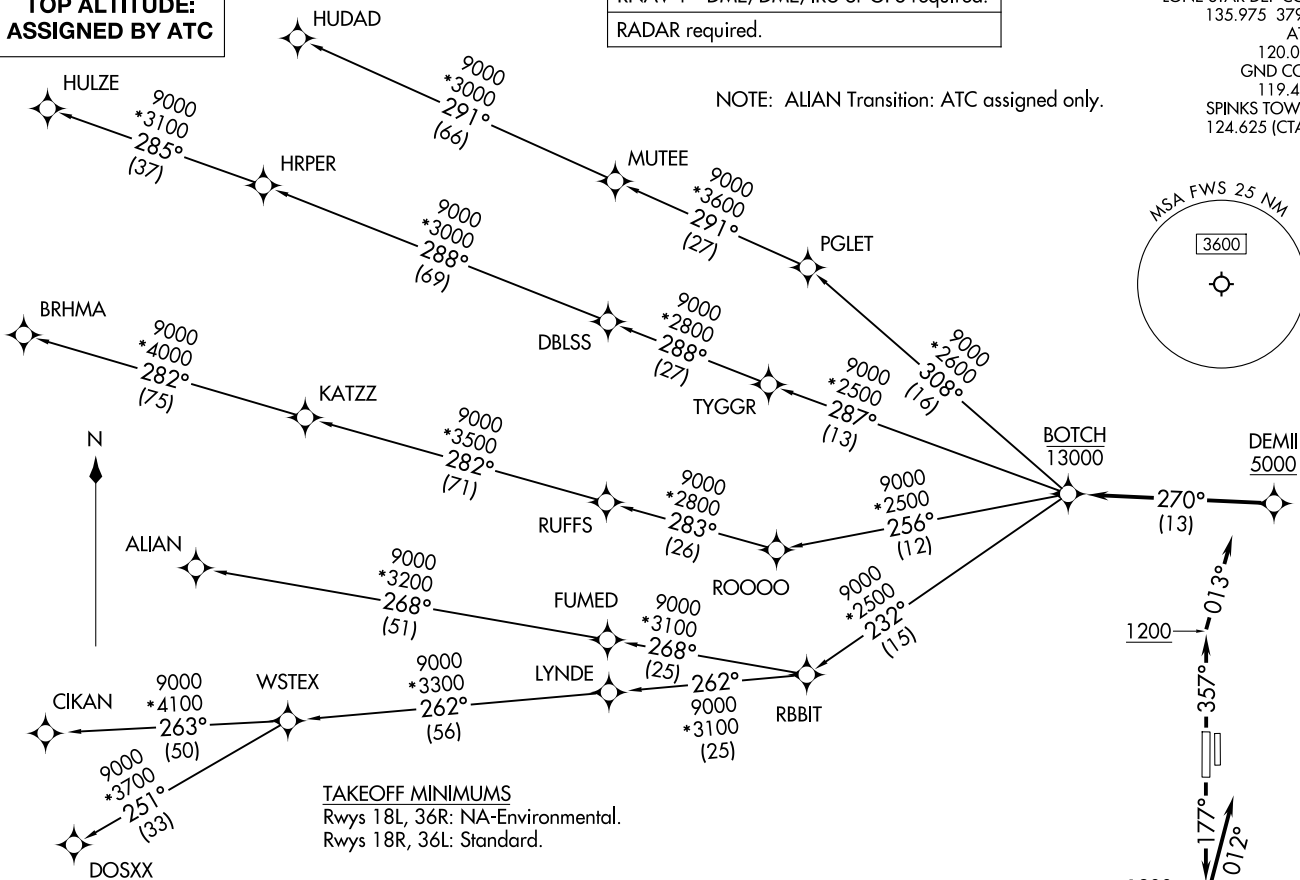


BOTCH TWO DEPARTURE (RNAV)  
(BOTCH2.BOTCH) 14MAY26

(BOTCH2.BOTCH) 26134  
BOTCH TWO DEPARTURE (RNAV)

AL-6917 (FAA)

FORT WORTH SPINKS (FWS)  
FORT WORTH, TEXAS



**TAKEOFF MINIMUMS**  
Rwys 18L, 36R: NA-Environmental.  
Rwys 18R, 36L: Standard.

NOTE: Chart not to scale.

(CONTINUED ON FOLLOWING PAGE)

# BOTCH TWO DEPARTURE (RNAV)



## DEPARTURE ROUTE DESCRIPTION

TAKEOFF RUNWAY 18R: Climb on heading 177° to 1200, then on heading 012° or as assigned by ATC, for vectors to cross DEMII at or above 5000, thence. . .

TAKEOFF RUNWAY 36L: Climb on heading 357° to 1200, then on heading 013° or as assigned by ATC, for vectors to cross DEMII at or above 5000, thence. . .

. . . on track 270° to cross BOTCH at or below 13000, then on (transition). Maintain ATC assigned altitude, expect filed altitude 10 minutes after departure.

ALIAN TRANSITION (BOTCH2.ALIAN)

BRHMA TRANSITION (BOTCH2.BRHMA)

CIKAN TRANSITION (BOTCH2.CIKAN)

DOSXX TRANSITION (BOTCH2.DOSXX)

HUDAD TRANSITION (BOTCH2.HUDAD)

HULZE TRANSITION (BOTCH2.HULZE)

WSTEX TRANSITION (BOTCH2.WSTEX)

SC-2, 11 JUN 2026 to 09 JUL 2026

SC-2, 11 JUN 2026 to 09 JUL 2026