

KUSSO THREE DEPARTURE (RNAV)  
(KUSSO3.KUSSO) 14MAY26

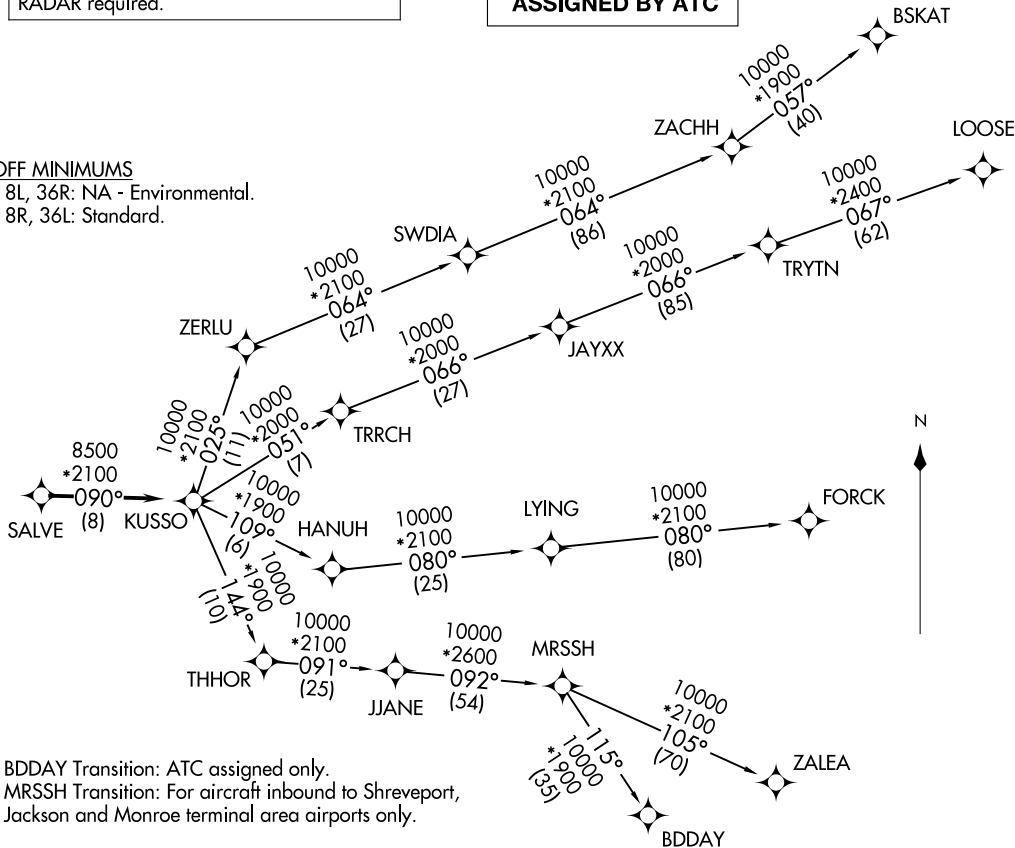
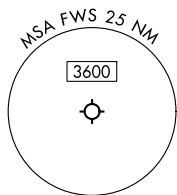
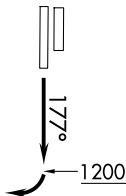
FORT WORTH, TEXAS  
FORT WORTH SPINKS (FWS)

LONE STAR DEP CON  
135.975 379.9  
ATIS  
120.025  
GND CON  
119.475  
SPINKS TOWER ★  
124.625 (CTAF)

RNAV 1 - DME/DME/IRU or GPS required.  
RADAR required.

**TOP ALTITUDE:  
ASSIGNED BY ATC**

**TAKEOFF MINIMUMS**  
Rwys 18L, 36R: NA - Environmental.  
Rwys 18R, 36L: Standard.



NOTE: BDDAY Transition: ATC assigned only.  
NOTE: MRSSH Transition: For aircraft inbound to Shreveport,  
Jackson and Monroe terminal area airports only.

(CONTINUED ON FOLLOWING PAGE)

NOTE: Chart not to scale.

(KUSSO3.KUSSO) 26134  
KUSSO THREE DEPARTURE (RNAV)

AL-6917 (FAA)

FORT WORTH SPINKS (FWS)  
FORT WORTH, TEXAS

# KUSSO THREE DEPARTURE (RNAV)



## DEPARTURE ROUTE DESCRIPTION

TAKEOFF RUNWAY 18R: Climb on heading 177° to 1200 before turning right.

When entering controlled airspace, fly heading assigned by ATC, expect RADAR vectors to SALVE, then on track 090° to KUSSO, then on assigned transition. Maintain ATC assigned altitude, expect filed altitude 10 minutes after departure.

BDDAY TRANSITION (KUSSO3.BDDAY)

BSKAT TRANSITION (KUSSO3.BSKAT)

FORCK TRANSITION (KUSSO3.FORCK)

LOOSE TRANSITION (KUSSO3.LOOSE)

MRSSH TRANSITION (KUSSO3.MRSSH)

ZALEA TRANSITION (KUSSO3.ZALEA)

SC-2, 11 JUN 2026 to 09 JUL 2026

SC-2, 11 JUN 2026 to 09 JUL 2026