

GARLAND SIX DEPARTURE
(GARL6.TT) 17APR25

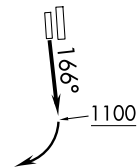
PEROT FLD/FORT WORTH ALLIANCE (AFTW)
FORT WORTH, TEXAS

LONE STAR DEP CON
118.1 306.95
ATIS
126.925
CLNC DEL
128.725
GND CON
132.65 306.2
ALLIANCE TOWER
135.15 257.9

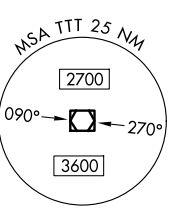
**TOP ALTITUDE:
ASSIGNED BY ATC**

RADAR and DME required.

NOTE: SOLDO Transition: ATC assigned.



MAVERICK
113.1 TTT
Chan 78



TAKEOFF MINIMUMS

Rwys 34L/R: Standard.
Rwy 16L: 300-2¼ or standard with minimum climb of 220'/NM to 1100, or alternatively, with standard takeoff minimums and a normal 200'/NM climb gradient, takeoff must occur no later than 1900' prior to DER.
Rwy 16R: 300-2¼ or standard with minimum climb of 225'/NM to 1100, or alternatively, with standard takeoff minimums and a normal 200'/NM climb gradient, takeoff must occur no later than 2000' prior to DER.

NOTE: Chart not to scale.

BONHAM
114.6 BYP
Chan 93

PARIS
113.6 PRX
Chan 83

TEXARKANA
116.3 TXK
Chan 110

NOBLY

ECKEY

SHERO

TRISS

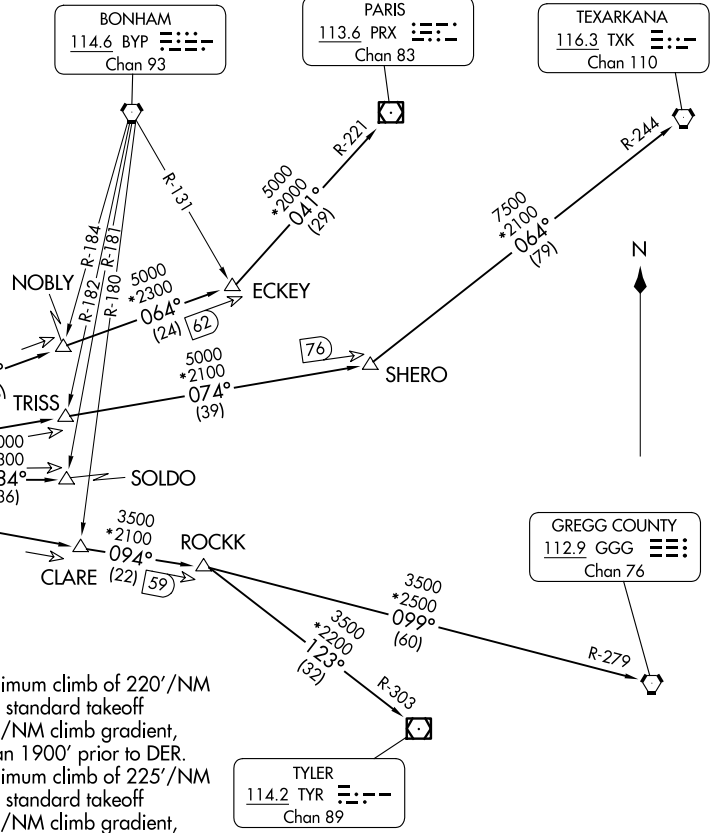
SOLDO

ROCKK

CLARE

GREGG COUNTY
112.9 GGG
Chan 76

TYLER
114.2 TYR
Chan 89



(CONTINUED ON FOLLOWING PAGE)

(GARL6.TT) 25107
GARLAND SIX DEPARTURE

AL-6918 (FAA)
PEROT FLD/FORT WORTH ALLIANCE (AFTW)
FORT WORTH, TEXAS

GARLAND SIX DEPARTURE

FORT WORTH, TEXAS



DEPARTURE ROUTE DESCRIPTION

TAKEOFF RUNWAY 16R: Climb on heading 166° to 1100 before turning right.

When entering controlled airspace, fly assigned heading for RADAR vectors to appropriate route. Maintain ATC assigned altitude.

GREGG COUNTY TRANSITION (GARL6.GGG): From over TTT VOR/DME on TTT R-094 to ROCKK, then on GGG R-279 to GGG VORTAC.

PARIS TRANSITION (GARL6.PRX): From over TTT VOR/DME on TTT R-064 to ECKEY, then on PRX R-221 to PRX VOR/DME.

SOLDO TRANSITION (GARL6.SOLDO): From over TTT VOR/DME on TTT R-084 to SOLDO.

TEXARKANA TRANSITION (GARL6.TXK): From over TTT VOR/DME on TTT R-074 to SHERO, then on TXK R-244 to TXK VORTAC.

TYLER TRANSITION (GARL6.TYR): From over TTT VOR/DME on TTT R-094 to ROCKK, then on TYR R-303 to TYR VOR/DME.

SC-2, 11 JUN 2026 to 09 JUL 2026

SC-2, 11 JUN 2026 to 09 JUL 2026