

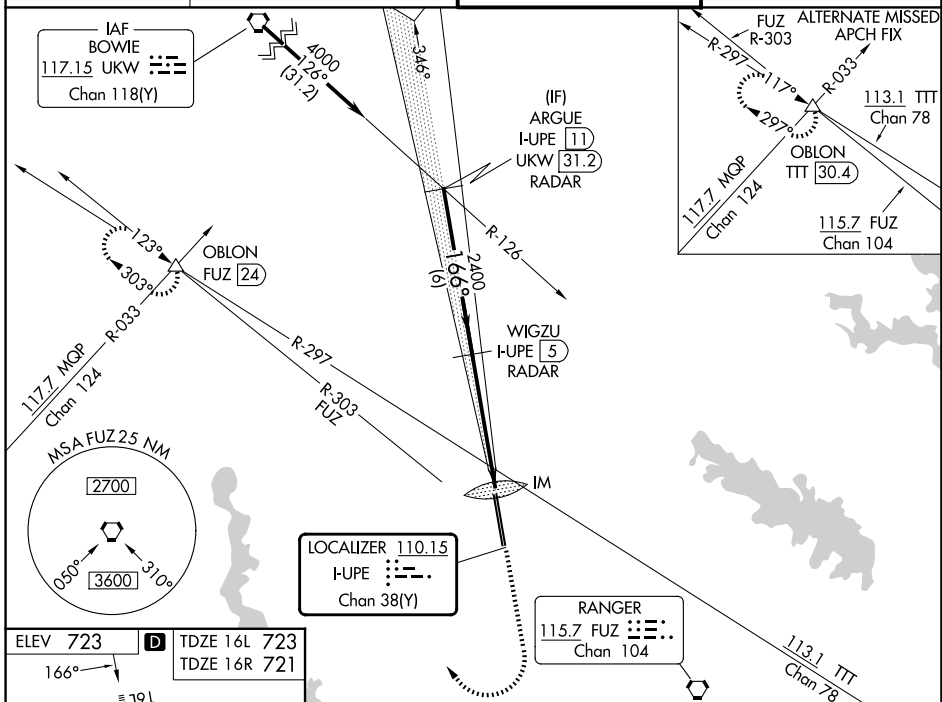
LOC/DME I-UPE 110.15 Chan 38(Y)	APP CRS 166°	Rwy Ldg 16L 16R	10600 723	10410 721
DME or RADAR required.		ALSIF-2		

ILS or LOC RWY 16L

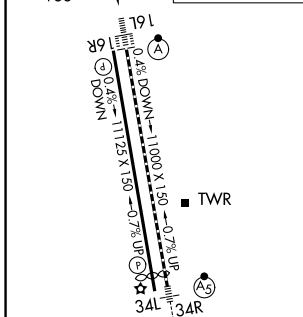
PEROT FLD/FORT WORTH ALLIANCE (A/FW)

<p>⚠ Circling NA east of Rwy 16L-34R. For inop ALS, increase S-ILS 16L Cat E visibility to RVR 4000 and S-LOC 16L Cat C/D/E visibility to RVR 6000.</p>	<p>MISSED APPROACH: Climb to 2000 then climbing right turn to 3000 on heading 330° and FUZ VORTAC R-303 to OBLON INT/FUZ 24 DME and hold.</p>
---	---

ATIS 126.925	LONE STAR APP CON 118.1 306.95	ALLIANCE TOWER 135.15 257.9	GND CON 132.65 306.2
------------------------	--	---------------------------------------	--------------------------------



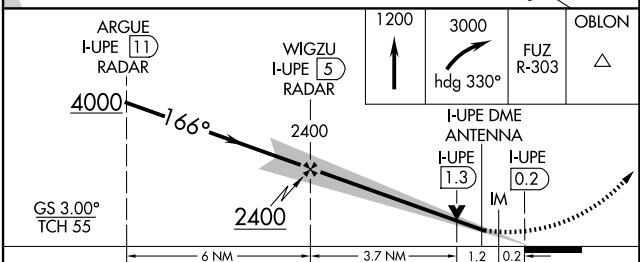
ELEV 723	D TDZE 16L 723
166°	TDZE 16R 721



TDZ/CL Rws 16L and 34R
HIRL Rws 16L-34R and 16R-34L
REIL Rws 16R and 34L

FAF to MAP 5.1 NM

Knots	60	90	120	150	180
Min:Sec	5:06	3:24	2:33	2:02	1:42



CATEGORY	A	B	C	D	E
S-ILS 16L	923/18 200 (200-½)				
S-LOC 16L	1220/24 497 (500-½)	1220/50 497 (500-1)			
SIDESTEP 16R	1240-1 519 (600-1)	1240-1½ 519 (600-1½)	1240-2 519 (600-2)		
CIRCLING	1240-1 517 (600-1)	1320-1 597 (600-1)	1360-1¾ 637 (700-1¾)	1360-2 637 (700-2)	1380-2¼ 657 (700-2¼)

ILS or LOC RWY 16L

SC-2, 11 JUN 2026 to 09 JUL 2026

SC-2, 11 JUN 2026 to 09 JUL 2026