

WAAS CH 82541 W16B	APP CRS 166°	Rwy Ldg 10600 TDZE 723 Apt Elev 723
--	------------------------	--

RNAV (GPS) RWY 16L

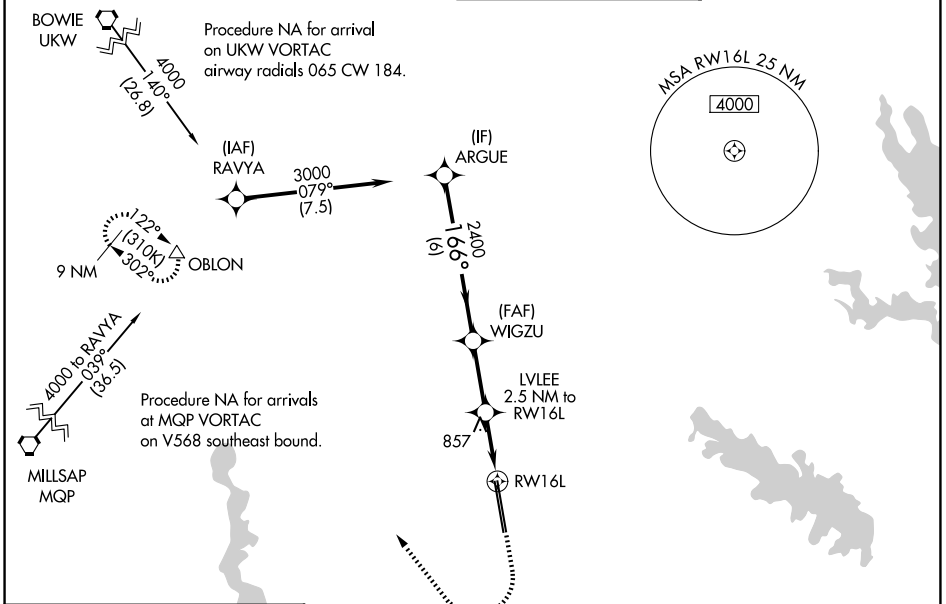
PEROT FLD/FORT WORTH ALLIANCE (A.F.W)

⚠ For uncompensated Baro-VNAV systems, LNAV/VNAV NA below -8°C (18°F) or above 54°C (130°F). Circling NA east of Rwy 16L-34R. DME/DME RNP-0.3 NA. For inop ALS, increase LPV Cat E visibility to RVR 4000, LNAV/VNAV all Cats visibility to RVR 4500 and LNAV Cat E visibility to RVR 6000.

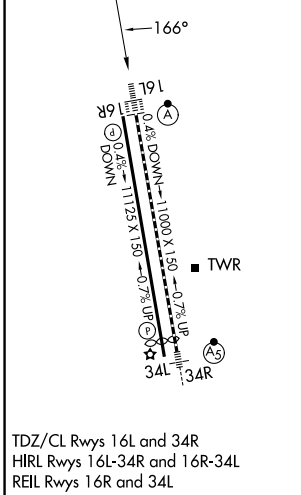
ALS-F-2

MISSED APPROACH: Climb to 1200 then climbing right turn to 3000 direct OBLON and hold.

ATIS 126.925	LONE STAR APP CON 118.1 306.95	ALLIANCE TOWER 135.15 257.9	GND CON 132.65 306.2
------------------------	--	---------------------------------------	--------------------------------



ELEV 723	D	TDZE 723
----------	----------	----------



	ARGUE	WIGZU	LVLEE	OBLON	
	3000	2400	2.5 NM to RWY 16L	△	
			*1.1 NM to RWY 16L		
		*1560			
	GP 3.00° TCH 55				
	6 NM	2.6 NM	1.4 NM	1.1 NM	
CATEGORY	A	B	C	D	E
LPV DA		923/18	200 (200-½)		
LNAV/VNAV DA		1016/24	293 (300-½)		
LNAV MDA	1120/24	397 (400-½)	1120/35	397 (400-¾)	
CIRCLING	1160-1 437 (500-1)	1320-1 597 (600-1)	1360-1¾ 637 (700-1¾)	1380-2 657 (700-2)	1380-2¼ 657 (700-2¼)

RNAV (GPS) RWY 16L

SC-2, 11 JUN 2026 to 09 JUL 2026

SC-2, 11 JUN 2026 to 09 JUL 2026