

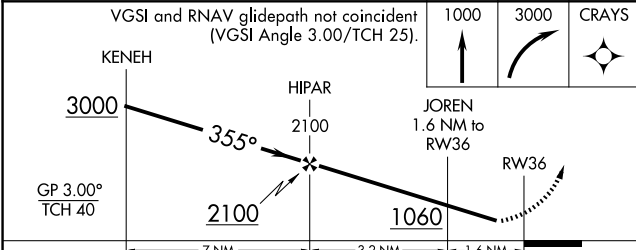
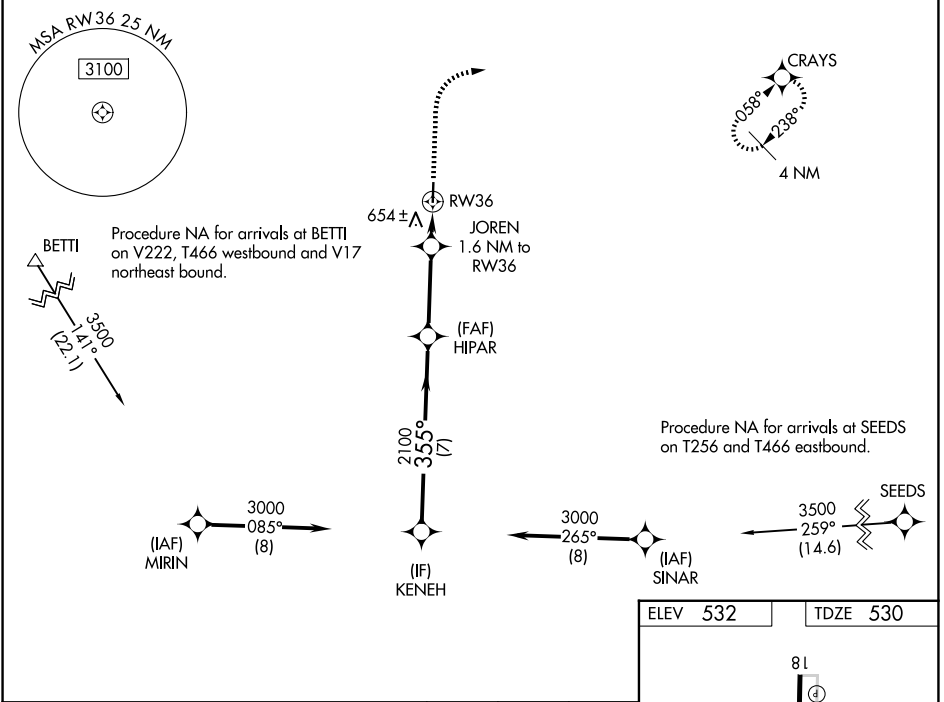
WAAS CH 53323 W36A	APP CRS 355°	Rwy Ldg TDZE Apt Elev	4001 530 532
--	------------------------	-----------------------------	---

RNAV (GPS) RWY 36

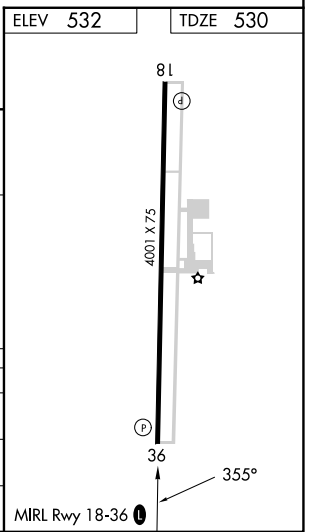
LOCKHART MUNI (5ØR)

RNP APCH - GPS.	MISSED APPROACH: Climb to 1000, then climbing right turn to 3000 direct CRAYS and hold.
<p>∇ Rwy 36 helicopter visibility reduction below 3/4 NA. Baro-VNAV NA. Use San Marcos altimeter setting; when not received, use Austin-Bergstrom Intl altimeter setting; increase LPV DA to 830 feet; increase LNAV/VNAV DA to 880 feet; increase all MDAs 20 feet and visibility Cat C 1/8 SM.</p>	

AUSTIN APP CON 120.875 270.25	UNICOM 122.8 (CTAF) Ø
---	--



CATEGORY	A	B	C	D
LPV DA	813-1 283 (300-1)			NA
LNAV/VNAV DA	863-1 1/8 333 (400-1 1/8)			NA
LNAV MDA	940-1 410 (500-1)		940-1 1/8 410 (500-1 1/8)	NA



SC-3, 11 JUN 2026 to 09 JUL 2026

SC-3, 11 JUN 2026 to 09 JUL 2026