

WAAS CH 82637 W09B	APP CRS 096°	Rwy Ldg TDZE 6911 9038 Apt Elev 9070
--	------------------------	--

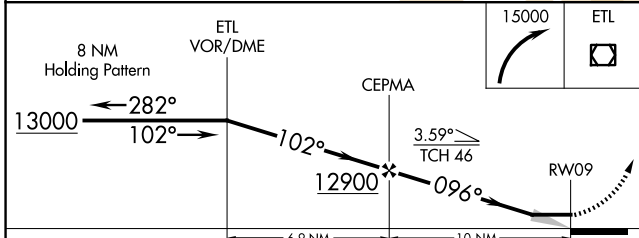
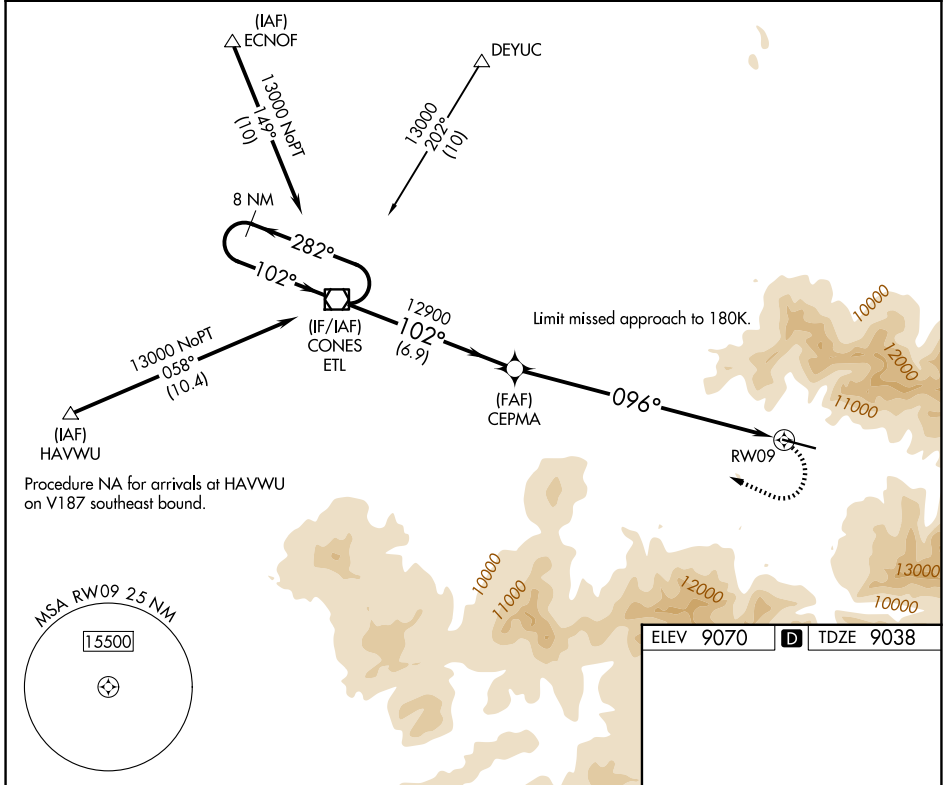
RNAV (GPS) Z RWY 9

TELLURIDE RGNL (TEX)

⚠ Circling NA at night. When local altimeter setting not received, procedure NA.
⚠ Circling NA north of Rwy 9-27. DME/DME RNP-0.3 NA.
⚠ -17°C *Missed approach requires a minimum climb of 380 feet per NM to 12500; if unable to meet climb gradient, see RNAV (GPS) Y RWY 9.

MISSED APPROACH: Climbing right turn to 15000 direct ETL VOR/DME and hold, continue climb-in-hold to 15000.

AWOS-3 118.325	DENVER CENTER 125.35 354.05	UNICOM 123.0 (CTAF) ①
--------------------------	---------------------------------------	---------------------------------



CATEGORY	A	B	C	D
LP MDA*	10640-1¼ 1602 (1600-1¼)	10640-1½ 1602 (1600-1½)	10640-3 1602 (1600-3)	NA
CIRCLING	11640-1¼ 2570 (2600-1¼)	11640-1½ 2570 (2600-1½)	11640-3 2570 (2600-3)	NA

ELEV 9070 **D** TDZE 9038

HIRL Rwy 9-27 **①**
 REIL Rws 9 and 27 **①**

SW-1, 11 JUN 2026 to 09 JUL 2026

SW-1, 11 JUN 2026 to 09 JUL 2026