

VORTAC CRP <b>115.5</b> Chan <b>102</b>	APP CRS <b>051°</b>	Rwy Ldg TDZE Apt Elev <b>N/A</b> <b>N/A</b> <b>80</b>
---	------------------------	--

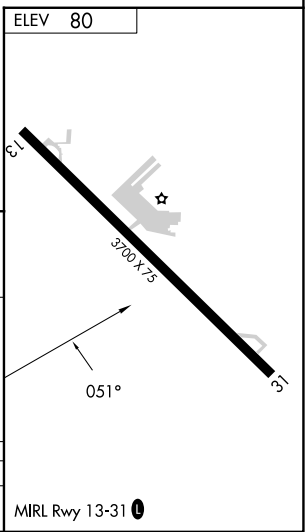
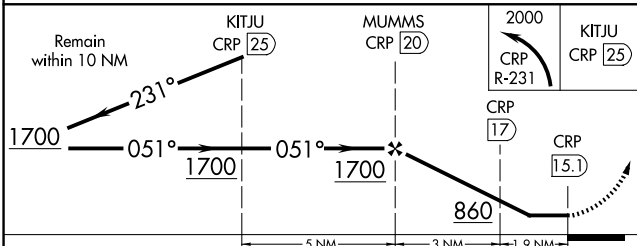
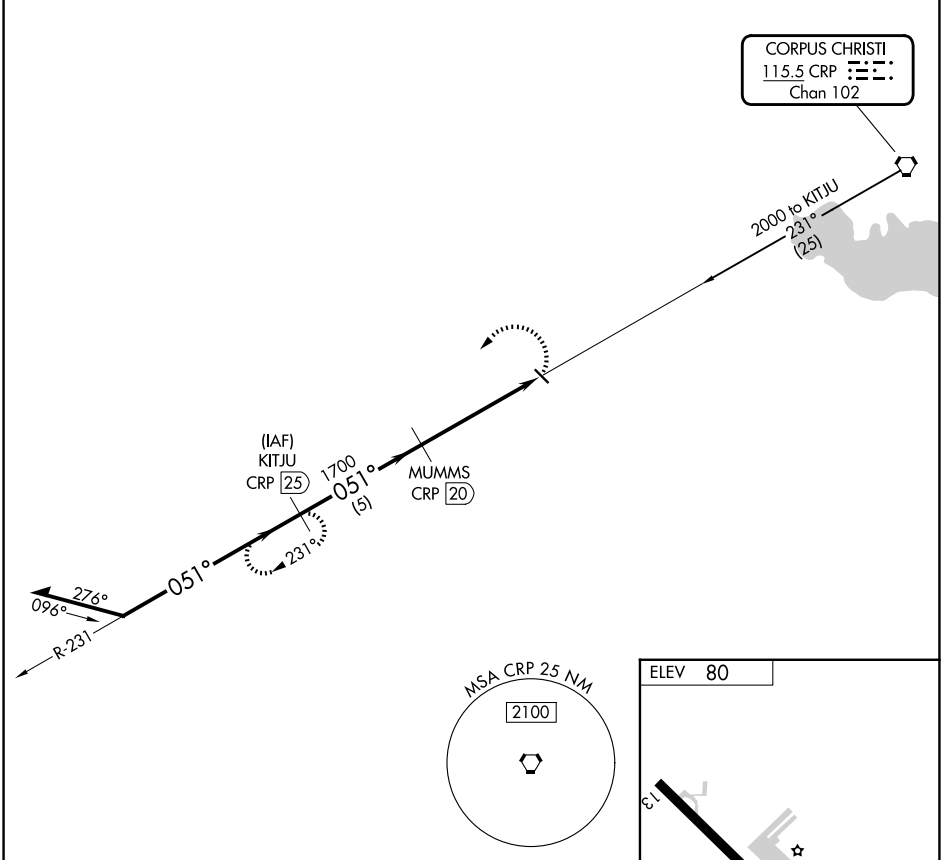
# VOR/DME-A

NUECES COUNTY (RBO)

**NA** When local altimeter setting not received, use Corpus Christi Intl altimeter setting. Circling not authorized northeast of Rwy 13-31.

MISSED APPROACH: Climbing left turn to 2000 via CRP R-231 to KITJU/CRP 25 DME and hold.

AWOS-3 <b>118.175</b>	CORPUS APP CON ★ <b>120.9 348.725</b>	CTAF <b>122.9</b>	<b>122.8 0</b>
--------------------------	--	----------------------	----------------



CATEGORY	A	B	C	D
CIRCLING	660-1	580 (600-1)	NA	NA

MIRL Rwy 13-31 0

SC-3, 11 JUN 2026 to 09 JUL 2026

SC-3, 11 JUN 2026 to 09 JUL 2026