

WESLACO, TEXAS

AL-6930 (FAA)

26078

VOR/DME MFE 117.2 Chan 119	APP CRS 080°	Rwy Ldg TDZE Apt Elev 70	N/A N/A 70
--	------------------------	---------------------------------------	-------------------------

VOR-A
MID VALLEY (TXW)

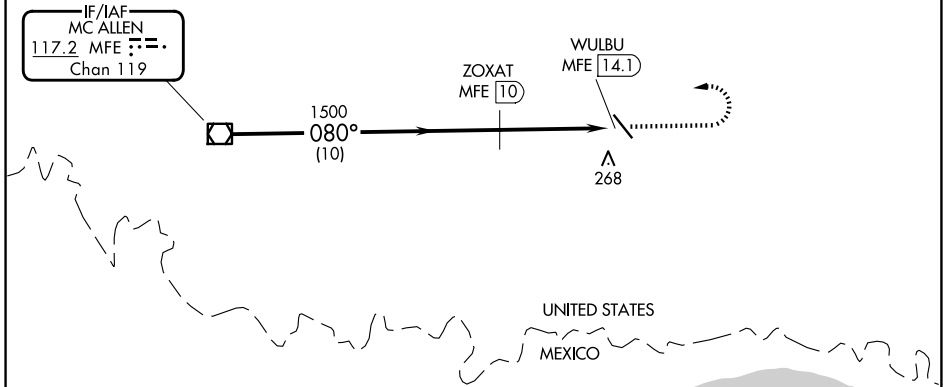
DME required.

▼ When local altimeter not received, use McAllen altimeter setting and increase all MDA 40 feet.

▲ MISSED APPROACH: Climb to 1000 then climbing left turn to 2000 direct MFE VOR/DME.

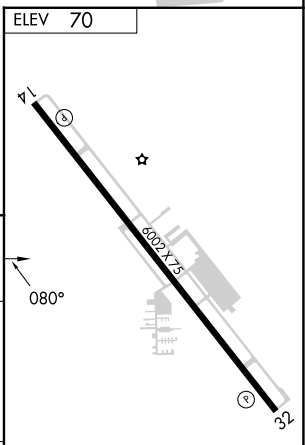
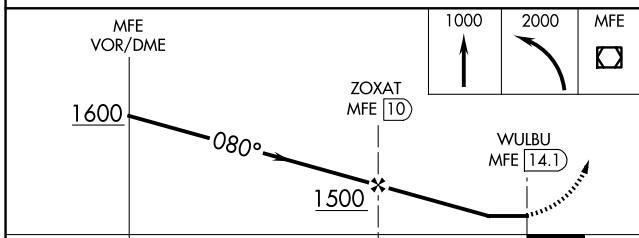
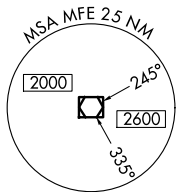
AWOS-3PT 118.575	VALLEY APP CON 126.55 377.2	CLNC DEL 125.95	UNICOM 122.8 (CTAF) 0
----------------------------	---------------------------------------	---------------------------	---------------------------------

Procedure NA for arrival on MFE VOR/DME airway radials 029 CW 075.



SC-3, 11 JUN 2026 to 09 JUL 2026

SC-3, 11 JUN 2026 to 09 JUL 2026



CATEGORY	A	B	C	D
CIRCLING	620-1	550 (600-1)	700-1¾ 630 (700-1¾)	NA

WESLACO, TEXAS
Orig-C 25JAN24

26°11'N-97°58'W

MID VALLEY (TXW)
VOR-A