

APP CRS	Rwy Ldg	3700
354°	TDZE	12
	Apt Elev	12

RNAV (GPS) RWY 35

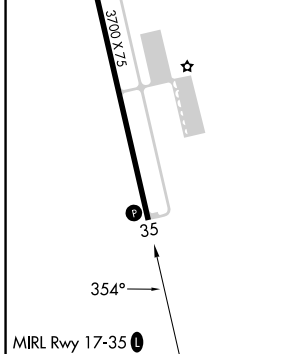
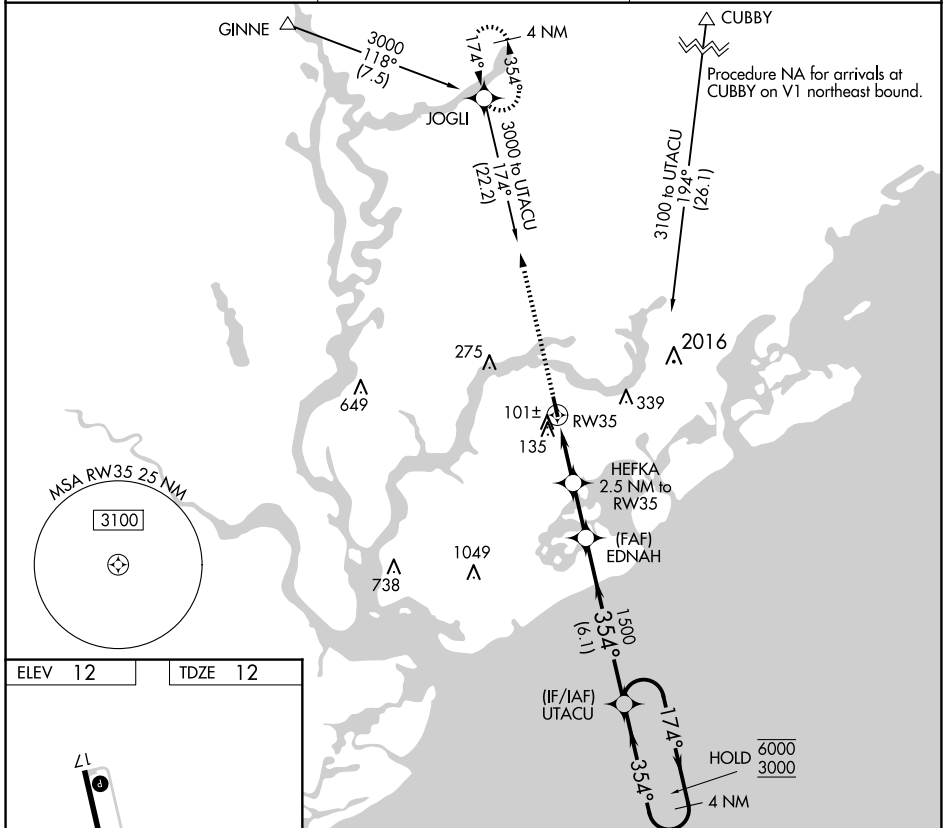
MT PLEASANT RGNL-FAISON FLD (L.R.O)

RNP APCH - GPS.

▽
▲

MISSED APPROACH: Climb to 3000 direct JOGLI and hold, continue climb-in-hold to 3000.

AWOS-3 118.625	CHARLESTON APP CON 121.275 379.925	UNICOM 122.7 (CTAF) 0
--------------------------	--	---------------------------------



3000	JOGLI	VGSI and descent angles not coincident (VGSI Angle 4.00/TCH 27).	4 NM	
			Holding Pattern	
	HEFKA 2.5 NM to RW35	EDNAH	UTACU	
	0.9 NM to RW35	3.04° TCH 35	174° → 6000	
		840	← 354° 3000	
	0.9 NM	1.7 NM	2 NM	6.1 NM
CATEGORY	A	B	C	D
LNAV MDA	400-1	388 (400-1)	400-1½ 388 (400-1½)	NA
CIRCLING	460-1 448 (500-1)	520-1 508 (600-1)	700-2 688 (700-2)	NA

SE-2, 11 JUN 2026 to 09 JUL 2026

SE-2, 11 JUN 2026 to 09 JUL 2026