

LOC/DME I-UKF <b>111.55</b> Chan 52(Y)	APP CRS <b>007°</b>	Rwy Ldg TDZE <b>6201</b> <b>1276</b> Apt Elev <b>1303</b>
--	------------------------	--

# ILS Y or LOC Y RWY 1

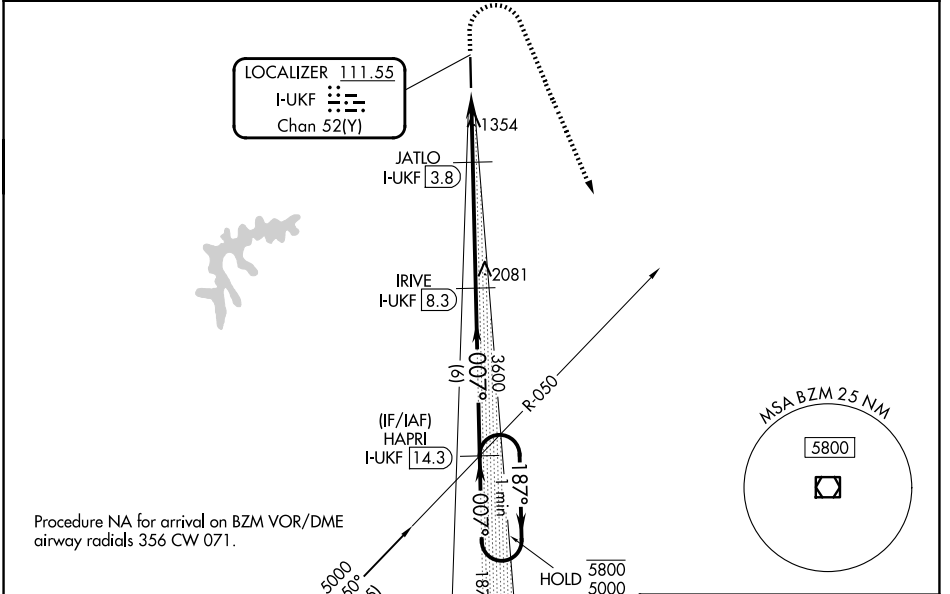
WILKES COUNTY (UKF)

DME required.

**MALSR**  
AS

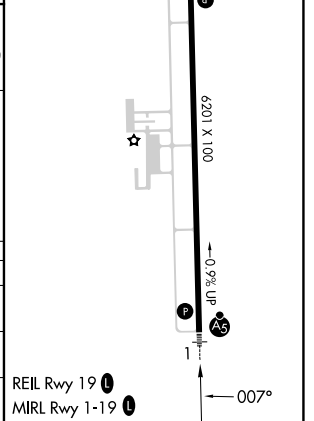
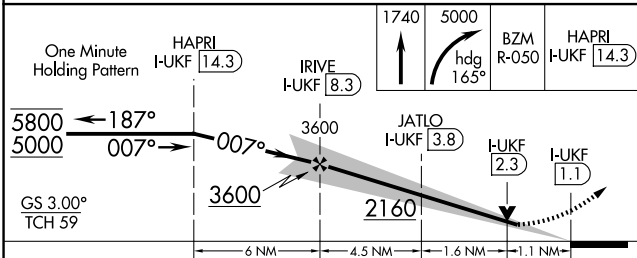
**MISSED APPROACH:** Climb to 1740 then climbing right turn to 5000 on heading 165° and BZM VOR/DME R-050 to HAPRI/I-UKF 14.3 DME and hold, continue climb-in-hold to 5000.

AWOS-3 <b>126.625</b>	ATLANTA CENTER <b>125.15 263.0</b>	UNICOM <b>122.7 (CTAF)</b>
--------------------------	---------------------------------------	-------------------------------



**BARRETT'S MOUNTAIN**  
113.75 BZM Chan 84(Y)

ELEV 1303	TDZE 1276
-----------	-----------



CATEGORY	A	B	C	D
S-ILS 1	1476-½		200 (200-½)	
S-LOC 1	1660-½ 384 (400-½)		1660-⅝ 384 (400-⅝)	
CIRCLING	1800-1 497 (500-1)	1880-1 577 (600-1)	1940-1¾ 637 (700-1¾)	2260-3 957 (1000-3)

SE-2, 11 JUN 2026 to 09 JUL 2026

SE-2, 11 JUN 2026 to 09 JUL 2026