

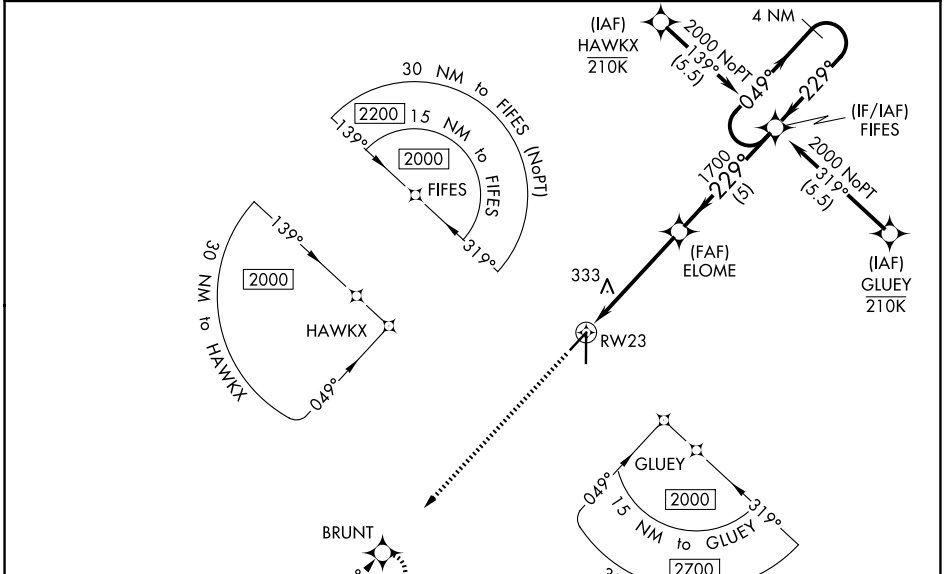
WAAS CH <b>45538</b> <b>W23A</b>	APP CRS <b>229°</b>	Rwy Ldg TDZE <b>88</b> Apt Elev <b>90</b>	<b>5001</b>
--	------------------------	---	-------------

# RNAV (GPS) RWY 23

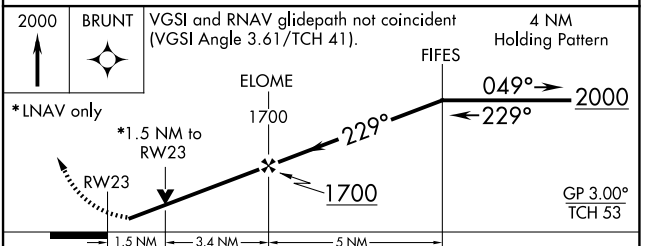
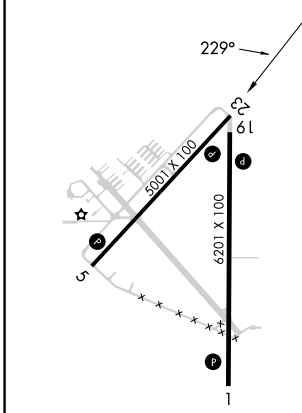
ZEPHYRHILLS MUNI (ZPH)

RNP APCH.	<p>Baro-VNAV and VDP NA when using Tampa Exec altimeter setting. For uncompensated Baro-VNAV systems, LNAV/VNAV NA below -15°C or above 54°C. Rwy 23 helicopter visibility reduction below 3/4 SM NA. When local altimeter setting not received, use Tampa Exec altimeter setting and increase all DA 48 feet and all MDA 60 feet. Increase LPV and LNAV/VNAV all Cats, LNAV and Circling Cat C/D visibility 1/4 mile.</p>	MISSED APPROACH: Climb to 2000 direct BRUNT and hold.
-----------	--	--

AWOS-3PT <b>118.975</b>	TAMPA APP CON <b>119.9 290.3</b>	UNICOM <b>123.075 (CTAF)</b>
----------------------------	-------------------------------------	---------------------------------



ELEV <b>90</b>	TDZE <b>88</b>
----------------	----------------



CATEGORY	A	B	C	D
LPV DA		377-1	289 (300-1)	
LNAV/VNAV DA		409-1	321 (400-1)	
LNAV MDA	600-1	512 (600-1)	600-1 3/8	512 (600-1 3/8)
CIRCLING	740-1	650 (700-1)	740-1 3/4 650 (700-1 3/4)	740-2 650 (700-2)

- MIRL Rwy 5-23
- HIRL Rwy 1-19
- REIL Rws 1 and 19

SE-3, 11 JUN 2026 to 09 JUL 2026

SE-3, 11 JUN 2026 to 09 JUL 2026