


WAAS CH 58244 W36A	APP CRS 360°	Rwy Ldg TDZE Apt Elev	6001 1301 1316
--	------------------------	-----------------------------	---

RNAV (GPS) RWY 36

MONETT RGNL (HFJ)

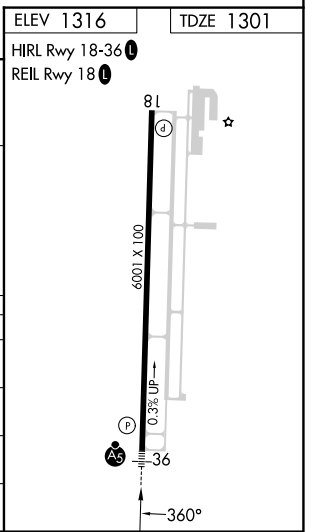
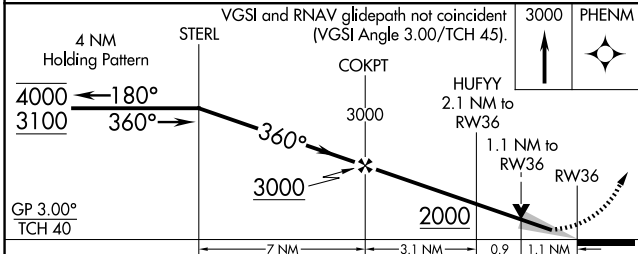
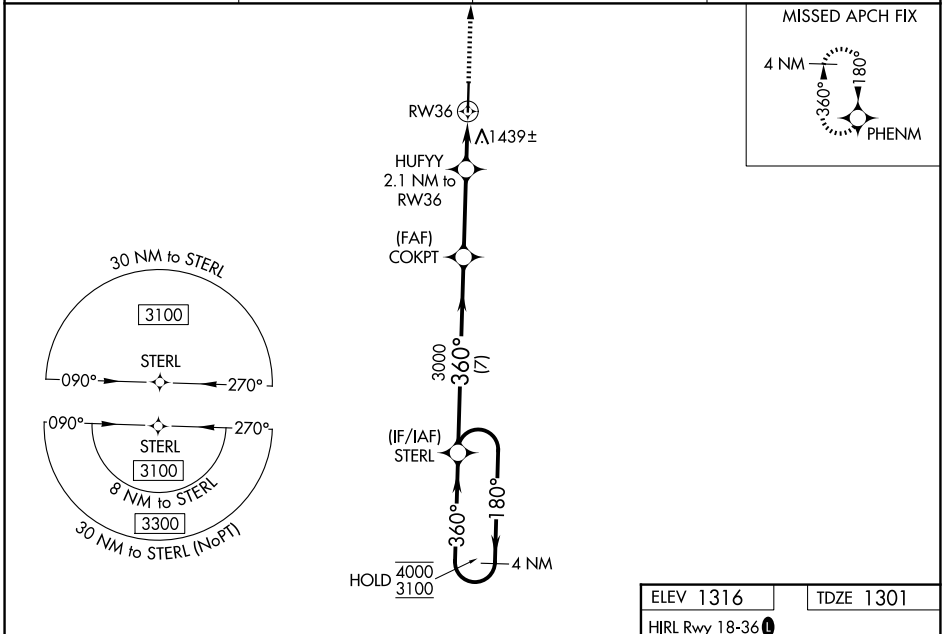
RNP APCH - GPS.

⚠ Baro-VNAV and VDP NA when using Joplin altimeter setting. For uncompensated Baro-VNAV systems, LNAV/VNAV NA below -17°C or above 54°C. When local altimeter setting not received, use Joplin altimeter setting: increase LPV DA to 1613 feet; increase LNAV/VNAV DA to 1862 feet and all visibilities 3/8 SM; increase all MDAs 120 feet and LNAV visibility Cats C and D 3/8 SM, and Circling visibility Cat C/D 1/2 SM.

MALSRL 

MISSED APPROACH:
Climb to 3000 direct PHENM and hold.

AWOS-3 118.275	SPRINGFIELD APP CON 124.95 318.2	CLNC DEL 121.85	UNICOM 123.075 (CTAF) 
--------------------------	--	---------------------------	---



CATEGORY	A	B	C	D
LPV DA		1501-1/2	200 (200-1/2)	
LNAV/VNAV DA		1750-7/8	449 (500-7/8)	
LNAV MDA	1700-1/2	399 (400-1/2)	1700-5/8	399 (400-5/8)
CIRCLING	1760-1 444 (500-1)	1900-1 584 (600-1)	1900-1 1/2 584 (600-1 1/2)	2060-2 1/2 744 (800-2 1/2)

NC-3, 11 JUN 2026 to 09 JUL 2026

NC-3, 11 JUN 2026 to 09 JUL 2026