

APP CRS 281°	Rwy Idg 3705
	TDZE 686
	Apt Elev 686

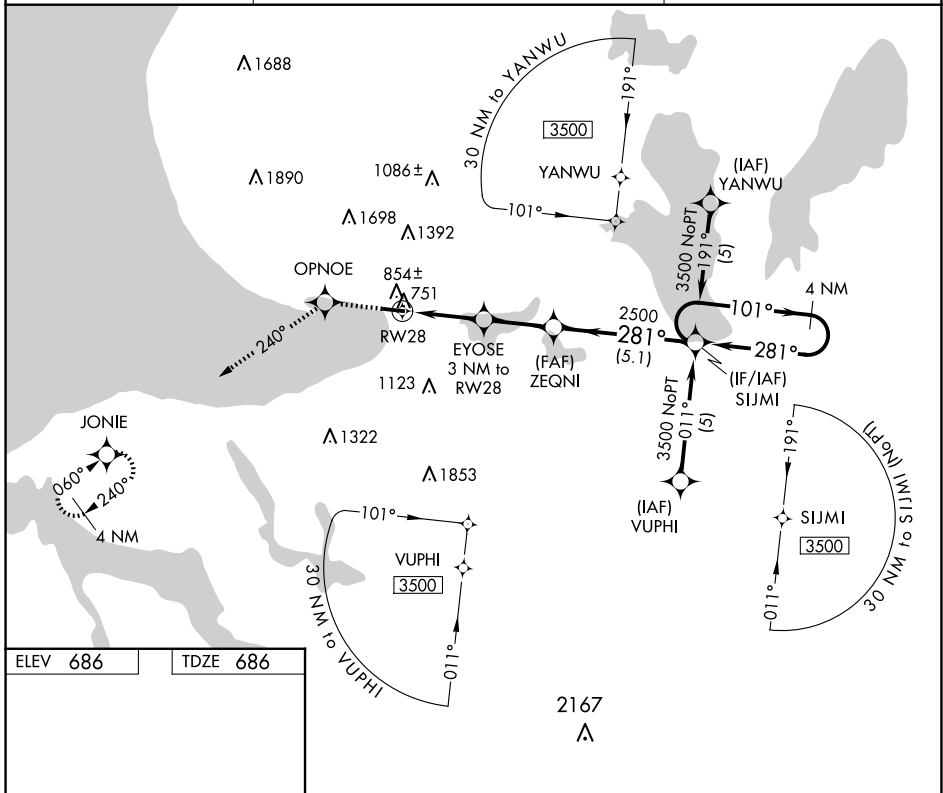
RNAV (GPS) RWY 28

HARBOR SPRINGS (MGN)

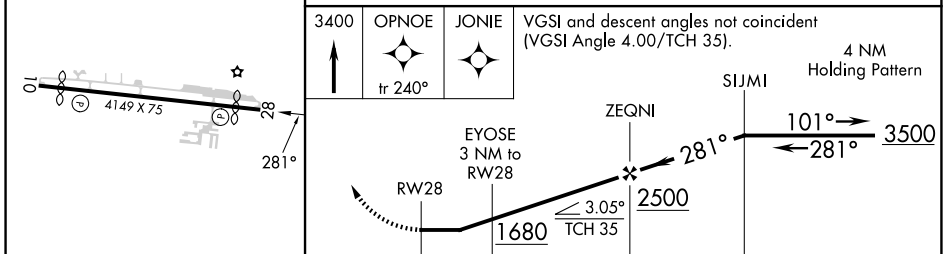
⚠ DME/DME RNP-0.3 NA. Helicopter visibility reduction below 1 SM NA. When local altimeter setting not received, use Pellsion altimeter setting and increase all MDAs 40 feet. Procedure NA at night.

MISSED APPROACH: Climb to 3400 direct OPNOE and via 240° track to JONIE and hold.

AWOS-3P 119.925	MINNEAPOLIS CENTER 134.6 354.05	UNICOM 122.8 (CTAF) 0
---------------------------	---	--



ELEV 686	TDZE 686
----------	----------



3400	OPNOE	JONIE	VGSI and descent angles not coincident (VGSI Angle 4.00/TCH 35).	
↑	✧	✧	4 NM Holding Pattern	
	fr 240°			
	RW28	EYOSE 3 NM to RW28	ZEQNI	SIJMI
		1680	2500	3500
		3.05° TCH 35		
	3 NM	2.5 NM	5.1 NM	
CATEGORY	A	B	C	D
LNAV MDA	1120-1	434 (500-1)	NA	
CIRCLING	1380-1 694 (700-1)	1500-1¼ 814 (900-1¼)	NA	

MIRL Rwy 10-28 **0**

EC-1, 11 JUN 2026 to 09 JUL 2026

EC-1, 11 JUN 2026 to 09 JUL 2026