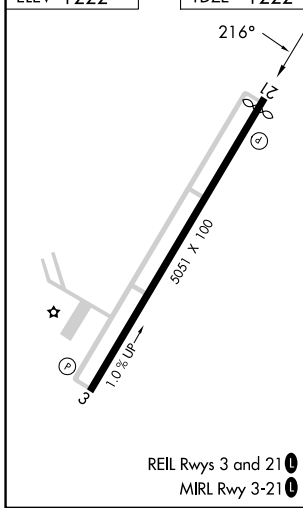
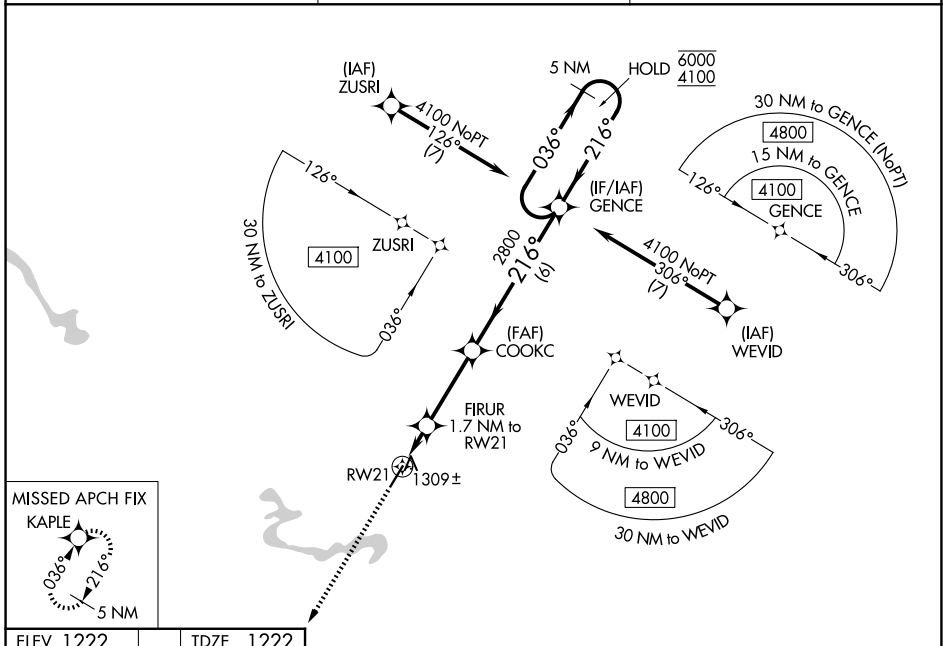


WAAS CH 77801 W21A	APP CRS 216°	Rwy Ldg TDZE 1222 Apt Elev 1222	5002
--	------------------------	---	-------------

RNAV (GPS) RWY 21

BIG SANDY RGNL (SJS)

RNP APCH - GPS.		MISSED APPROACH: Climb to 4300 direct KAPLE and hold.
<p>▼ For uncompensated Baro-VNAV systems, ▲ LNAV/VNAV NA below -17°C or above 54°C.</p>	AWOS-3 120.175	HUNTINGTON APP CON 119.75 270.1
		UNICOM 123.05 (CTAF) ①



ELEV 1222	TDZE 1222	4300 KAPLE	VGSI and RNAV glidepath not coincident (VGSI Angle 3.00/TCH 25).	5 NM Holding Pattern
				GENCE
				6000 4100
				GP 3.00° TCH 40
CATEGORY	A	B	C	D
LPV DA		1472-3/4	250 (300-3/4)	
LNAV/VNAV DA		1520-7/8	298 (300-7/8)	
LNAV MDA		1560-1	338 (400-1)	
CIRCLING	1740-1	518 (600-1)	1920-2 698 (700-2)	2020-2 1/2 798 (800-2 1/2)

SE-1, 11 JUN 2026 to 09 JUL 2026

SE-1, 11 JUN 2026 to 09 JUL 2026