

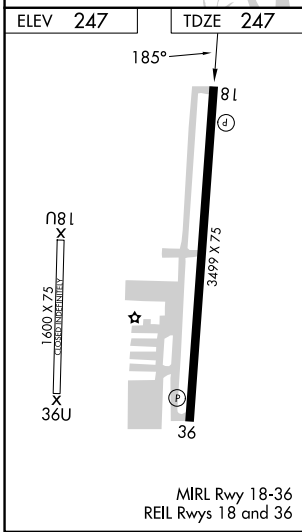
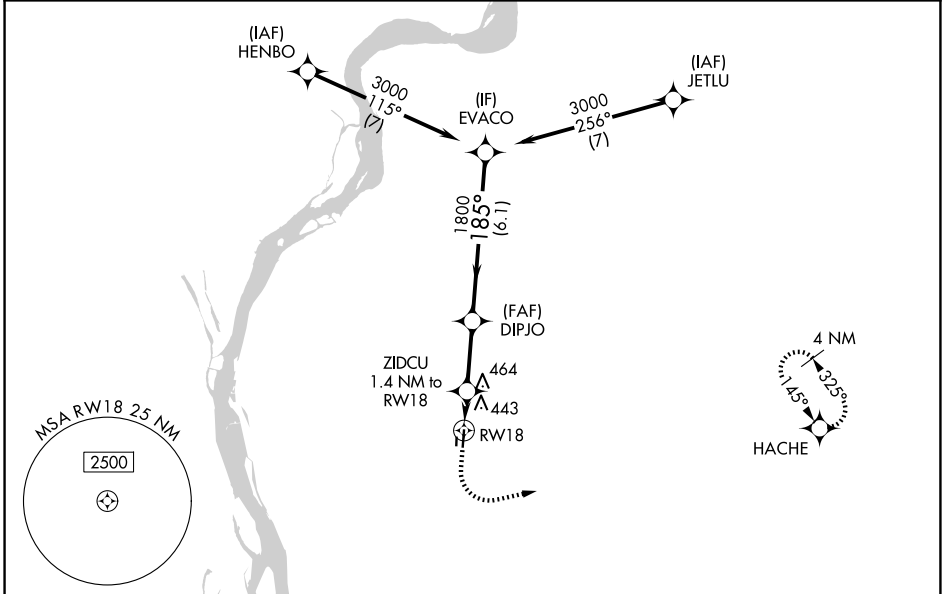
APP CRS	Rwy Ldg	<b>3499</b>
<b>185°</b>	TDZE	<b>247</b>
	Apt Elev	<b>247</b>

# RNAV (GPS) RWY 18

CHARLES W BAKER (2M8)

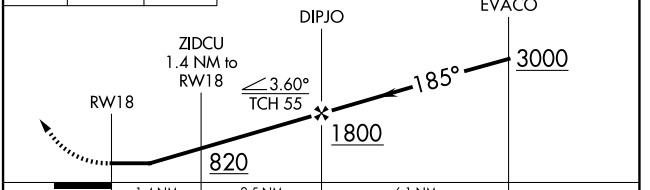
RNP APCH - GPS.		MISSED APPROACH: Climb to 1200 then climbing left turn to 3000 direct HACHE and hold.
▼ Rwy 18 helicopter visibility reduction below 1 SM NA. When local altimeter setting not received, use Millington/Memphis altimeter setting and increase all MDA 40 feet; and LNAV Cat C visibility 1/8 SM and Circling Cat C visibility 1/4 SM. Straight-in Rwy 18 NA at night, Circling Rwy 18 NA at night.		

AWOS-3PT <b>119.575</b>	MEMPHIS APP CON <b>125.8 338.3</b>	UNICOM <b>122.8</b> (CTAF)
----------------------------	---------------------------------------	-------------------------------



1200 3000 HACHE

VGSI and RNAV glidepath not coincident (VGSI Angle 4.00/TCH 40).



	1.4 NM	2.5 NM	6.1 NM	
CATEGORY	A	B	C	D
LNAV MDA	780-1	533 (600-1)	780-1½ 533 (600-1½)	NA
CIRCLING	780-1 533 (600-1)	860-1 613 (700-1)	900-1¾ 653 (700-1¾)	NA

SE-1, 11 JUN 2026 to 09 JUL 2026

SE-1, 11 JUN 2026 to 09 JUL 2026