

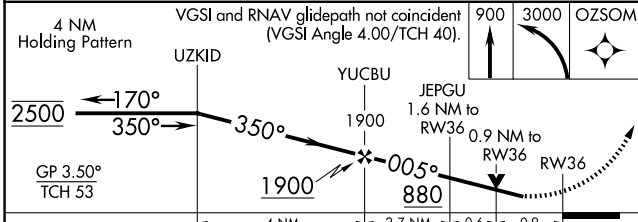
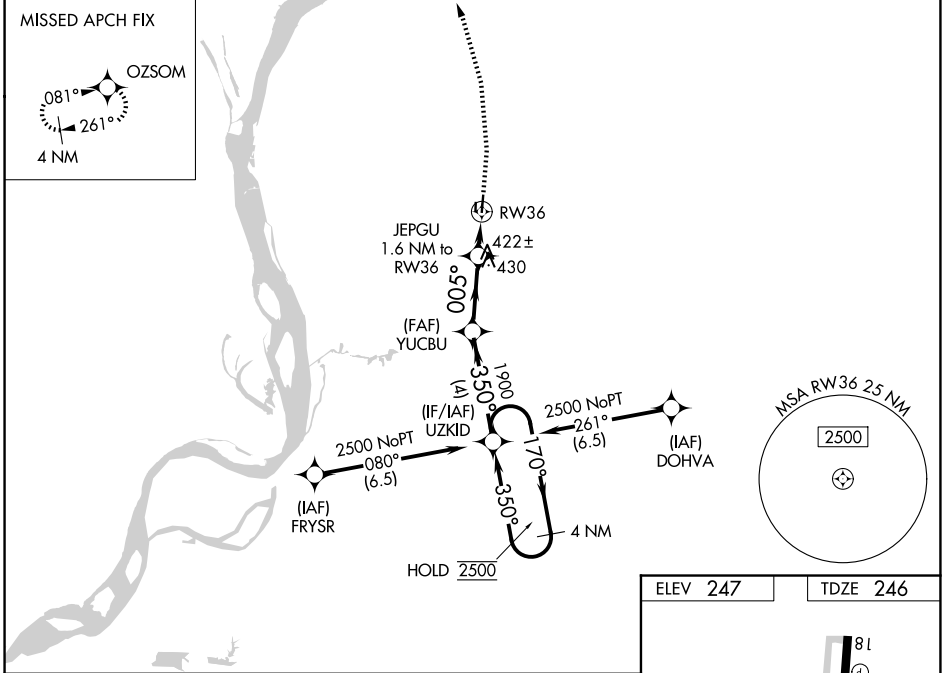
| | | |
|--|------------------------|---|
| WAAS CH 93924 W36A | APP CRS 005° | Rwy Ldg 3499 TDZE 246 Apt Elev 247 |
|--|------------------------|---|

RNAV (GPS) RWY 36

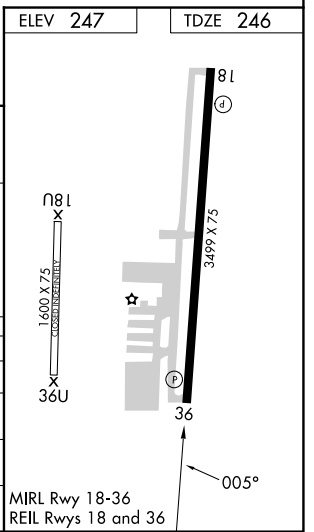
CHARLES W BAKER (2M8)

| | | |
|-----------------|--|---|
| RNP APCH - GPS. | <p>Baro-VNAV and VDP NA when using NQA altimeter setting. For uncompensated Baro-VNAV systems, LNAV/VNAV NA below -1.5°C or above 54°C. Rwy 36 helicopter visibility reduction below ¾ SM NA. Circling Rwy 18 NA at night. When local altimeter setting not received, use NQA altimeter setting: increase LPV DA to 643 feet and all visibilities ½ SM; increase LNAV/VNAV DA to 707 feet and all visibilities ½ SM; increase all MDAs 40 feet and LNAV visibility Cat C ½ SM, and Circling visibility Cat C ¼ SM.</p> | <p>MISSED APPROACH: Climb to 900 then climbing left turn to 3000 direct OZSOM and hold, continue climb-in-hold to 3000.</p> |
|-----------------|--|---|

| | | |
|----------------------------|---------------------------------------|-------------------------------|
| AWOS-3PT 119.575 | MEMPHIS APP CON 125.8 338.3 | UNICOM 122.8 (CTAF) |
|----------------------------|---------------------------------------|-------------------------------|



| CATEGORY | A | B | C | D |
|--------------|----------------------|----------------------|------------------------|----|
| LPV DA | 619-1 | 373 (400-1) | | NA |
| LNAV/VNAV DA | 683-1¼ | 437 (500-1¼) | | NA |
| LNAV MDA | 680-1 | 434 (500-1) | 680-1¼ 434 (500-1¼) | NA |
| CIRCLING | 760-1 513 (600-1) | 860-1 613 (700-1) | 900-1¼ 653 (700-1¼) | NA |



SE-1, 11 JUN 2026 to 09 JUL 2026

SE-1, 11 JUN 2026 to 09 JUL 2026