

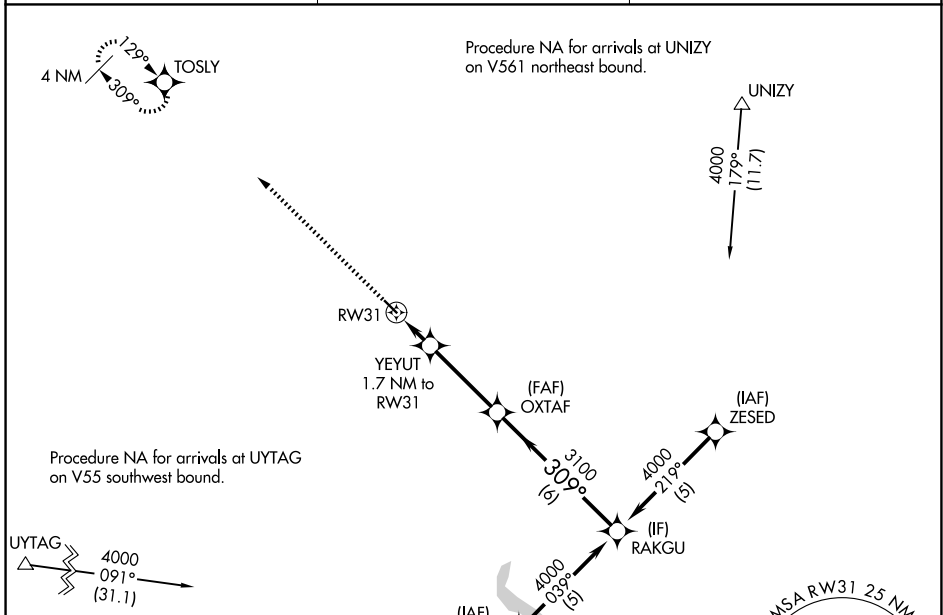
# RNAV (GPS) RWY 31

COOPERSTOWN MUNI (S32)

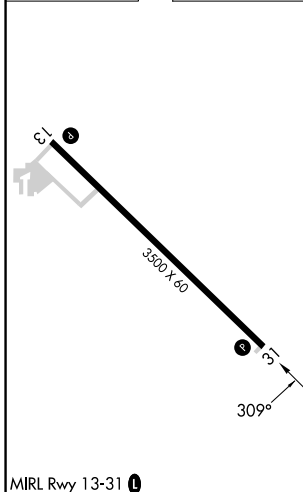
APP CRS <b>309°</b>	Rwy Ldg TDZE Apt Elev	<b>3500</b> <b>1424</b> <b>1424</b>
------------------------	-----------------------------	---

RNP APCH - GPS.	MISSED APPROACH: Climb to 3200 direct TOSLY and hold.
<p><b>⚠</b> Rwy 31 helicopter visibility reduction below 1 SM NA. Procedure NA at night.</p> <p><b>⚠</b> NA When local altimeter setting not received, use JMS altimeter setting and increase all MDAs 100 feet and LNAV visibility Cat C 3/8 SM, and Circling visibility Cat C 1/4 SM.</p>	

AWOS-3 <b>118.75</b>	MINNEAPOLIS CENTER <b>132.15 269.6</b>	CTAF <b>122.9</b>
-------------------------	---	----------------------



ELEV 1424	TDZE 1424
-----------	-----------



3200	TOSLY	VGSi and descent angles not coincident (VGSi Angle 3.00/TCH 25).		RAKGU
3100	YEYUT 1.7 NM to RW31	≤ 3.04° TCH 40	OXTAF	4000
2000	1.7 NM	3.4 NM	6 NM	
CATEGORY	A	B	C	D
LNAV MDA	1800-1		376 (400-1)	
CIRCLING	1880-1 456 (500-1)	1900-1 476 (500-1)	1940-1½ 516 (600-1½)	NA

NC-1, 11 JUN 2026 to 09 JUL 2026

NC-1, 11 JUN 2026 to 09 JUL 2026