

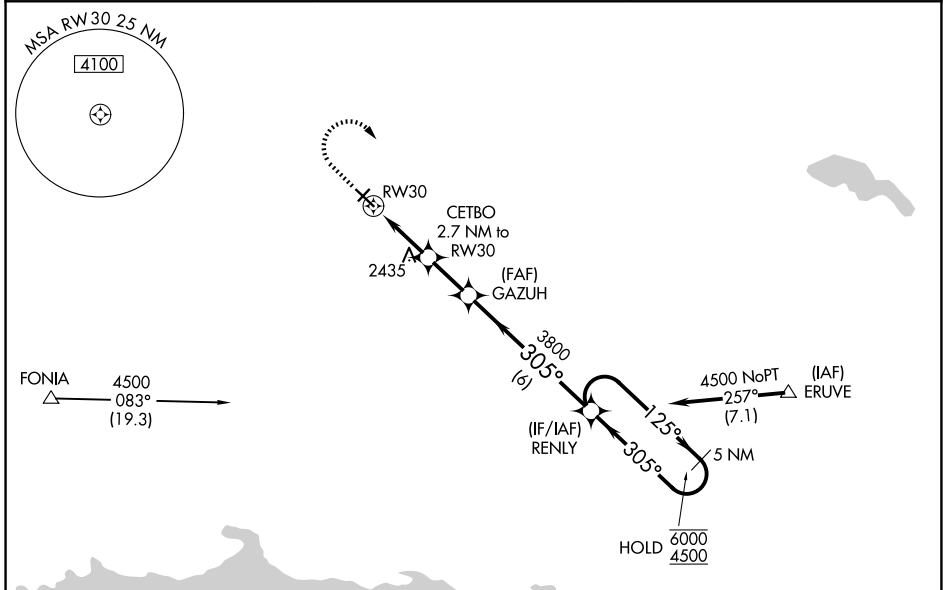
WAAS CH 56630 W30A	APP CRS 305°	Rwy Ldg TDZE Apt Elev	5102 2271 2271
--	------------------------	-----------------------------	---

RNAV (GPS) RWY 30

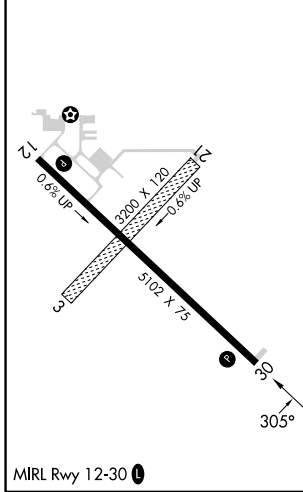
TIOGA MUNI (D60)

RNP APCH - GPS.	MISSED APPROACH: Climb to 3200 then climbing right turn to 4500 direct RENLY and hold.
<p>⚠ Rwy 30 helicopter visibility reduction below $\frac{3}{4}$ SM NA. For uncompensated Baro-VNAV systems, LNAV/VNAV NA below -19°C or above 54°C. Circling NA to Rwy's 3 and 21.</p>	

AWOS-3 118.575	MINNEAPOLIS CENTER 127.6 279.6	CTAF 122.9
--------------------------	--	----------------------



ELEV 2271	TDZE 2271
-----------	-----------



3200	4500	RENLY	VGSi and RNAV glidepath not coincident (VGSi Angle 3.00/TCH 25).	
				5 NM Holding Pattern
		GAZUH	RENLY	5 NM Holding Pattern
CETBO 2.7 NM to RWY 30 1.3 NM to RWY 30		3800	125° → 6000	← 305° 4500
3160		3800	GP 3.00° TCH 40	
1.3 1.4 2 NM 6 NM				
CATEGORY	A	B	C	D
LPV DA	2521-1 250 (300-1)			
LNAV/VNAV DA	2712-1 $\frac{3}{8}$ 441 (500-1 $\frac{3}{8}$)			
LNAV MDA	2720-1	449 (500-1)	2720-1 $\frac{3}{8}$	449 (500-1 $\frac{3}{8}$)
CIRCLING	2820-1 549 (600-1)	2980-1 709 (800-1)	2980-2 709 (800-2)	3000-2 $\frac{1}{4}$ 729 (800-2 $\frac{1}{4}$)

NC-1, 11 JUN 2026 to 09 JUL 2026

NC-1, 11 JUN 2026 to 09 JUL 2026