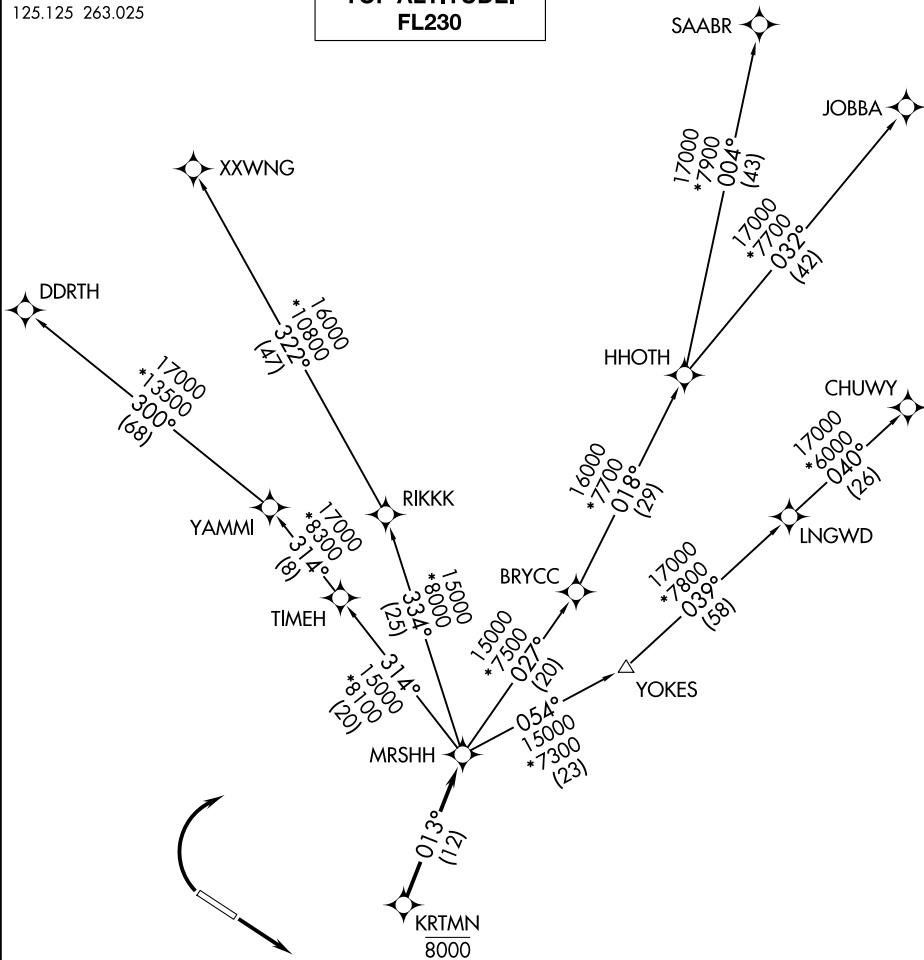


DENVER DEP CON
125.125 263.025

**TOP ALTITUDE:
FL230**



SW-1, 11 JUN 2026 to 09 JUL 2026

SW-1, 11 JUN 2026 to 09 JUL 2026

TAKEOFF MINIMUMS

Rwy 11: Standard.

Rwy 29: Standard with minimum climb of 370' per NM to 8000.

NOTE: DME/DME/IRU or GPS required.

NOTE: RNAV 1.

NOTE: Turbojets only.

NOTE: RADAR required.

NOTE: Chart not to scale.

(CONTINUED ON FOLLOWING PAGE)



DEPARTURE ROUTE DESCRIPTION

TAKEOFF RUNWAY 11: Climb on a heading between 030° CW 160° as assigned by ATC. Thence. . . .

TAKEOFF RUNWAY 29: Climbing right turn on a heading between 030° CW 110° as assigned by ATC. Thence. . . .

. . . .expect RADAR vectors to cross KRTMN at 8000 then on track 013° to MRS HH, then on (transition) maintain FL230 or filed lower altitude. Expect higher filed altitude ten minutes after departure.

CHUWY TRANSITION (MRS HH2.CHUWY)

DDRTH TRANSITION (MRS HH2.DDRTH)

JOBBA TRANSITION (MRS HH2.JOBBA)

SAABR TRANSITION (MRS HH2.SAABR)

XXWNG TRANSITION (MRS HH2.XXWNG)

SW-1, 11 JUN 2026 to 09 JUL 2026

SW-1, 11 JUN 2026 to 09 JUL 2026