

SKYEE ONE DEPARTURE (RNAV)

AL-9041 (FAA)

VANCE BRAND (LMO)
LONGMONT, COLORADO

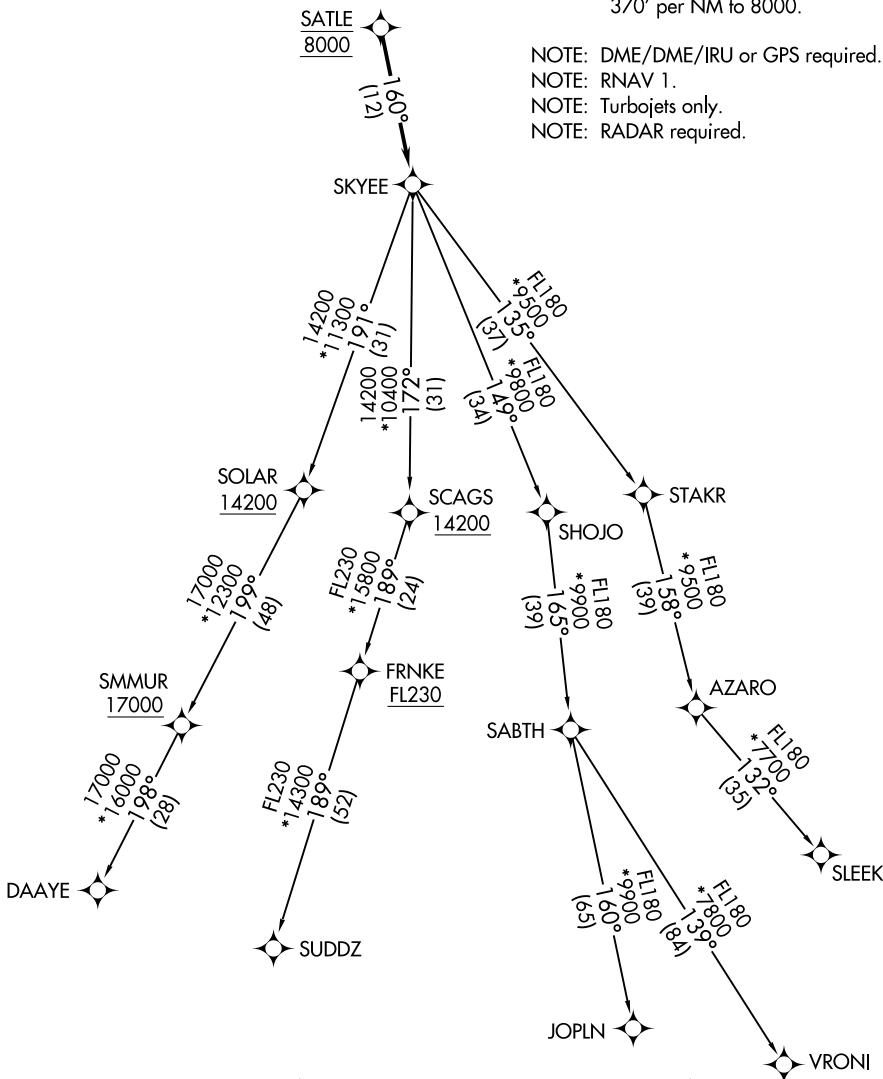
DENVER DEP CON
125.125 263.025

**TOP ALTITUDE:
FL230**

TAKEOFF MINIMUMS

Rwy 11: Standard.
Rwy 29: Standard with minimum climb of
370' per NM to 8000.

NOTE: DME/DME/IRU or GPS required.
NOTE: RNAV 1.
NOTE: Turbojets only.
NOTE: RADAR required.



NOTE: Chart not to scale.

(CONTINUED ON FOLLOWING PAGE)

SKYEE ONE DEPARTURE (RNAV)

SW-1, 11 JUN 2026 to 09 JUL 2026

SW-1, 11 JUN 2026 to 09 JUL 2026



DEPARTURE ROUTE DESCRIPTION

TAKEOFF RUNWAY 11: Climb on a heading between 030° CW 160° as assigned by ATC. Thence. . . .

TAKEOFF RUNWAY 29: Climbing right turn on a heading between 030° CW 110° as assigned by ATC. Thence. . . .

. . . .expect RADAR vectors to cross SATLE at 8000 then on track 160° to SKYEE then on (transition) maintain FL230 or filed lower altitude. Expect higher filed altitude ten minutes after departure.

DAAYE TRANSITION (SKYEE1 .DAAYE)

JOPLN TRANSITION (SKYEE1 .JOPLN)

SLEEK TRANSITION (SKYEE1 .SLEEK)

SUDDZ TRANSITION (SKYEE1 .SUDDZ)

VRONI TRANSITION (SKYEE1 .VRONI)

SW-1, 11 JUN 2026 to 09 JUL 2026

SW-1, 11 JUN 2026 to 09 JUL 2026